

Fig. 1.

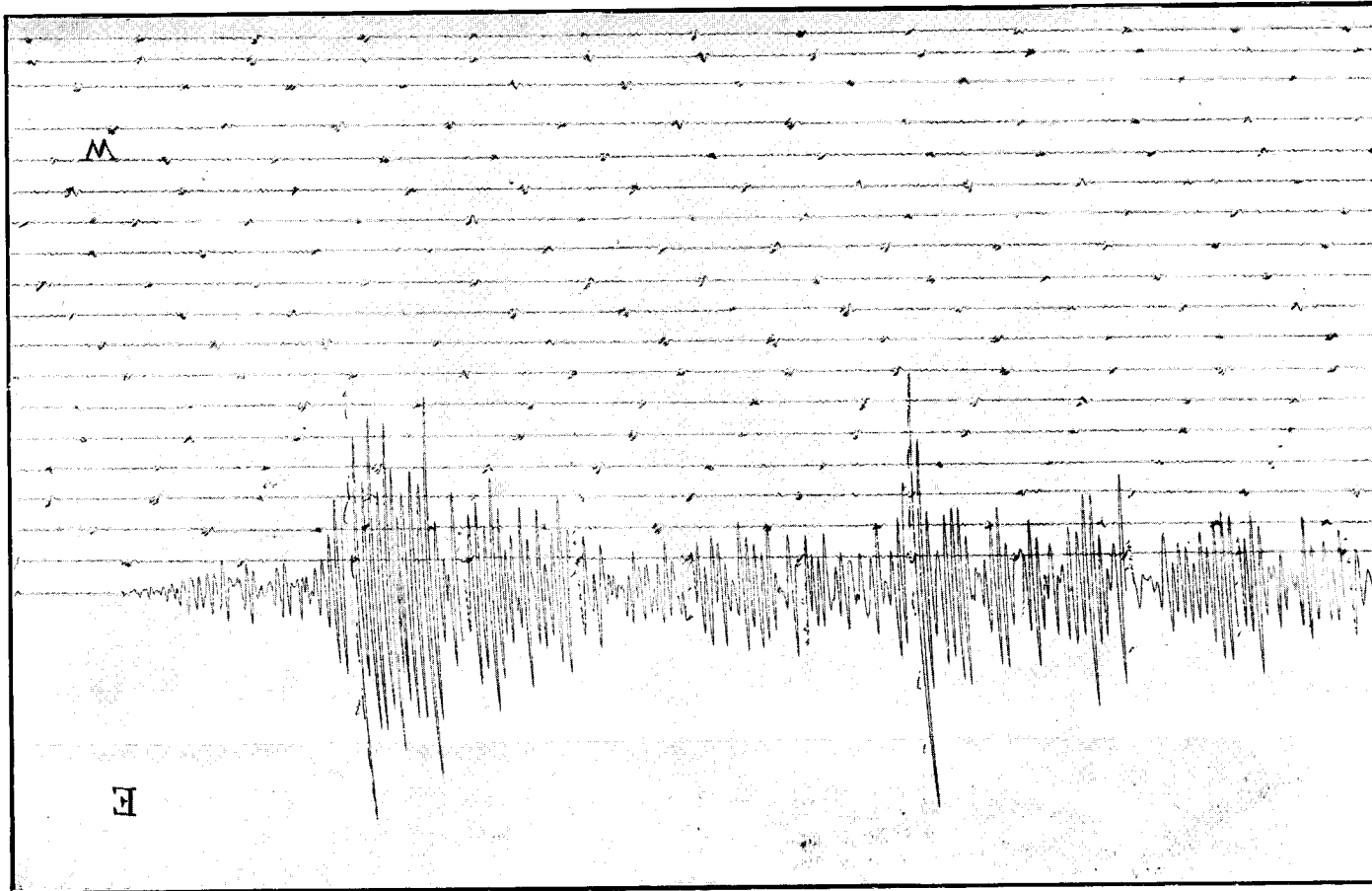
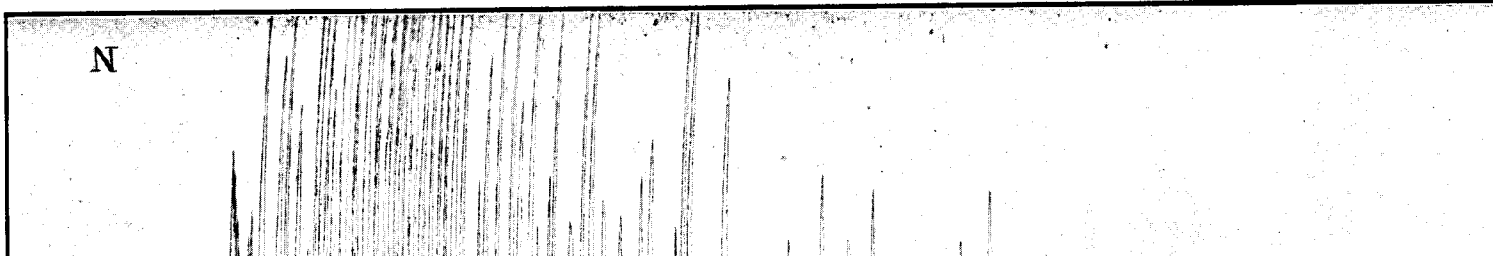


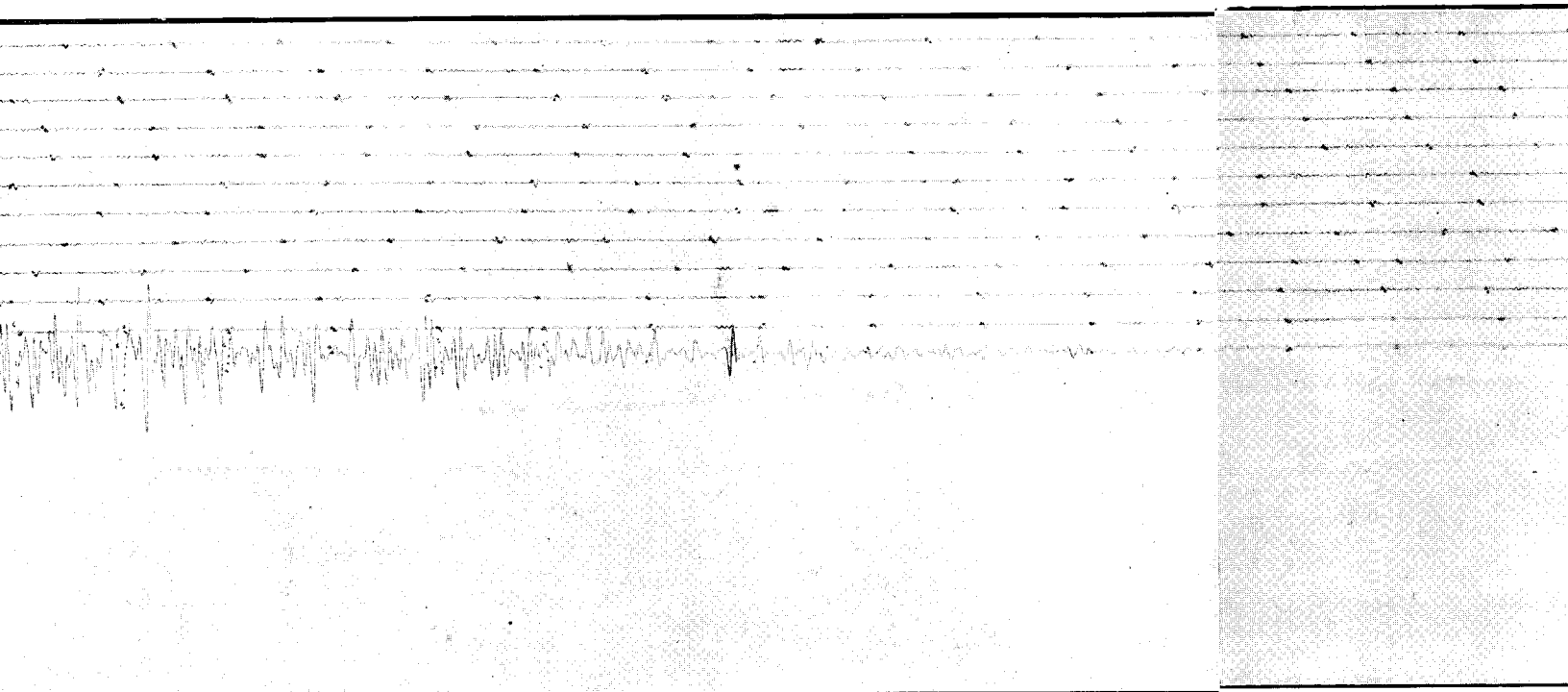
Fig. 2.



INSTITUTO GEOLOGICO DE MEXICO.

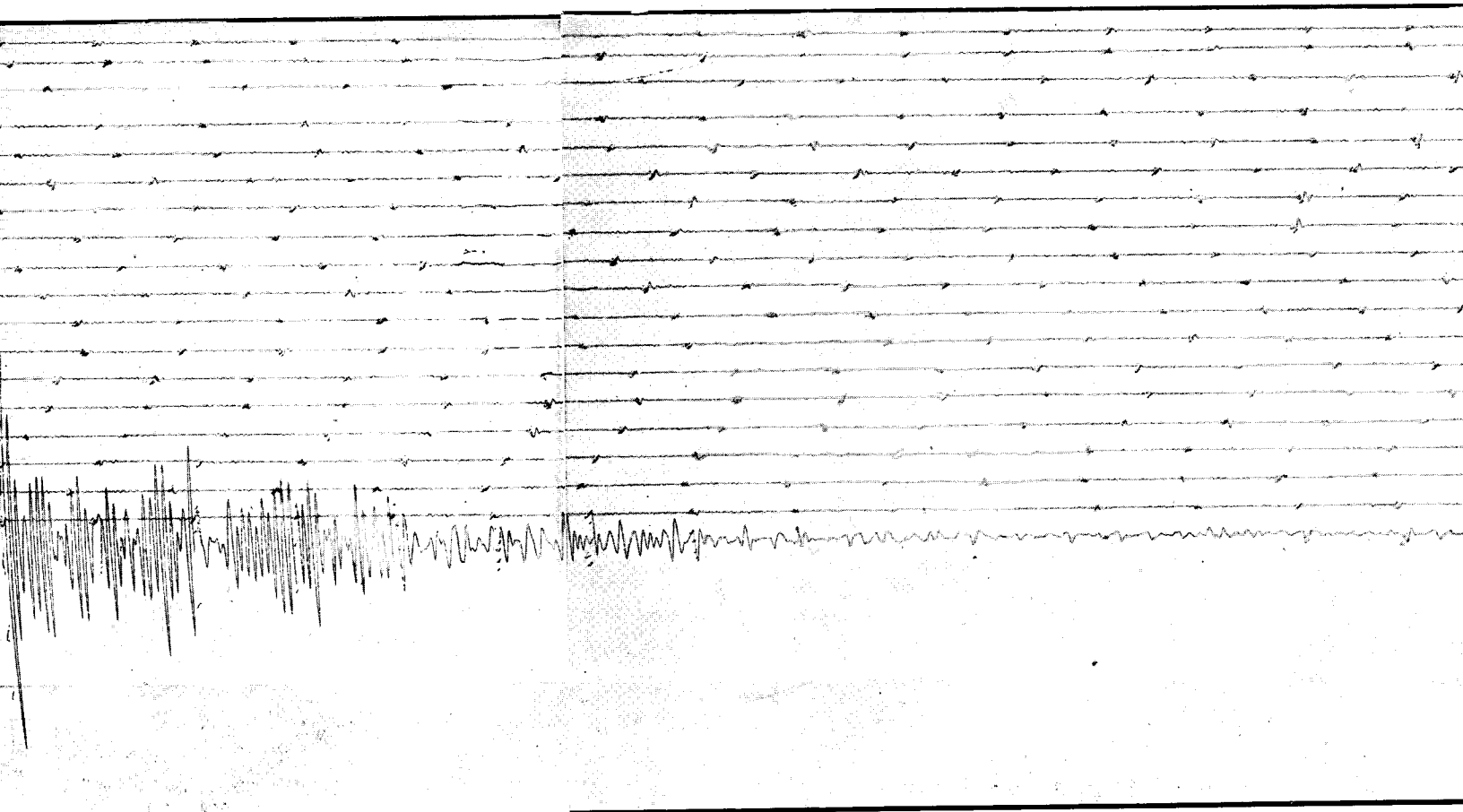
ESTACIONES SEISMOLOGICAS DE PRIMER ORDEN.

MERIDA.



Péndulo horizontal Wiechert de 1200 kg. Componente N. S.

MERIDA.



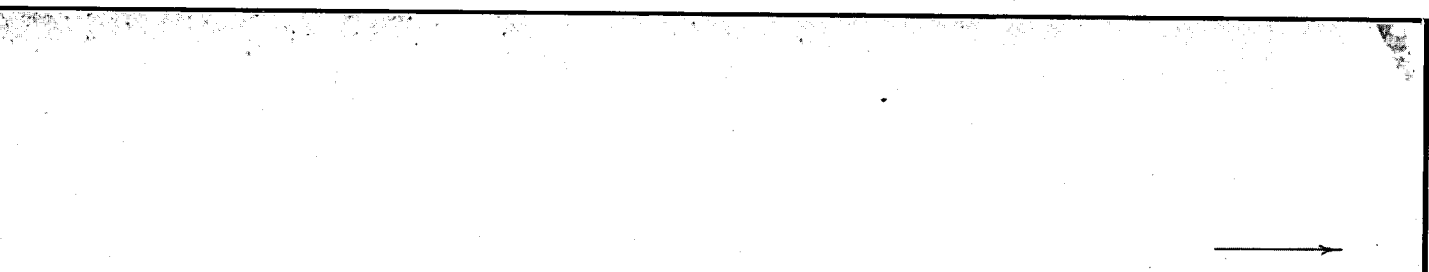
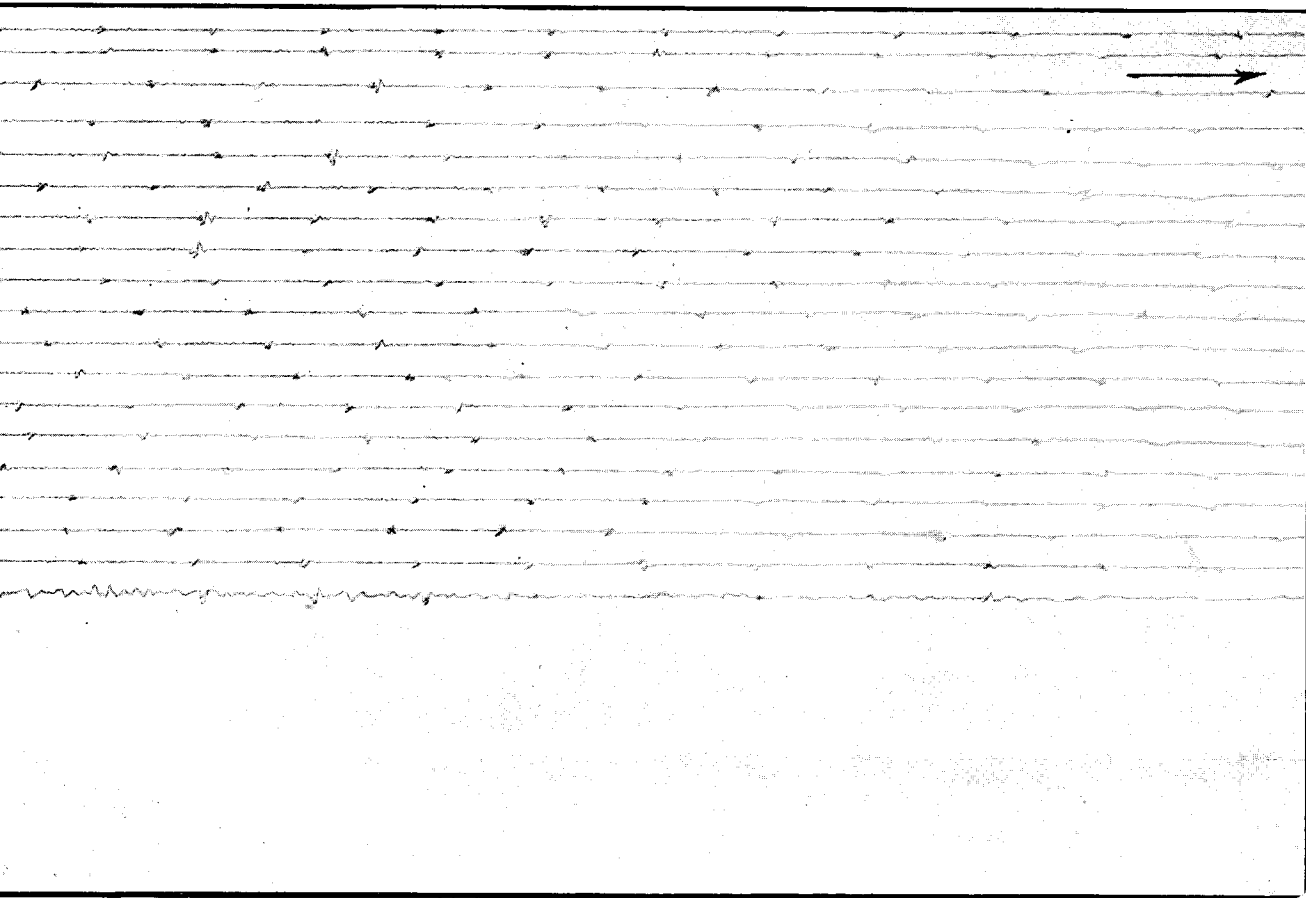
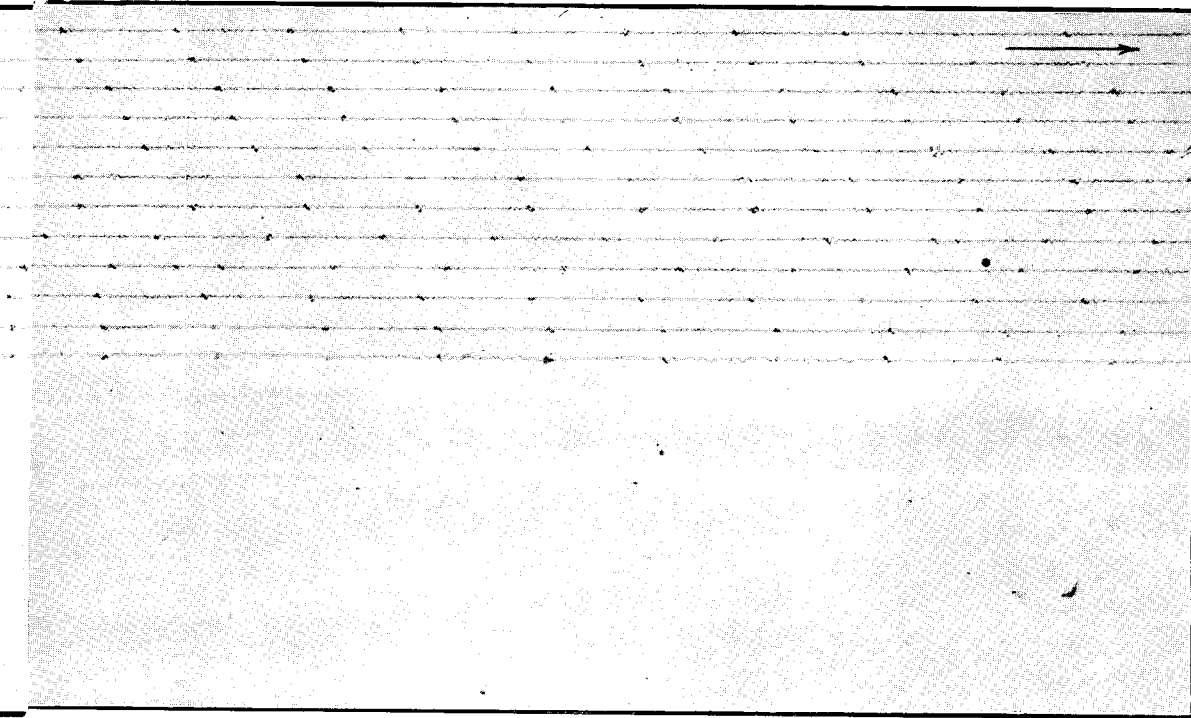
Péndulo horizontal Wiechert de 1200 kg. Componente E. W.

ZACATECAS.

MEXICO.

Lám. LVIII.

N.



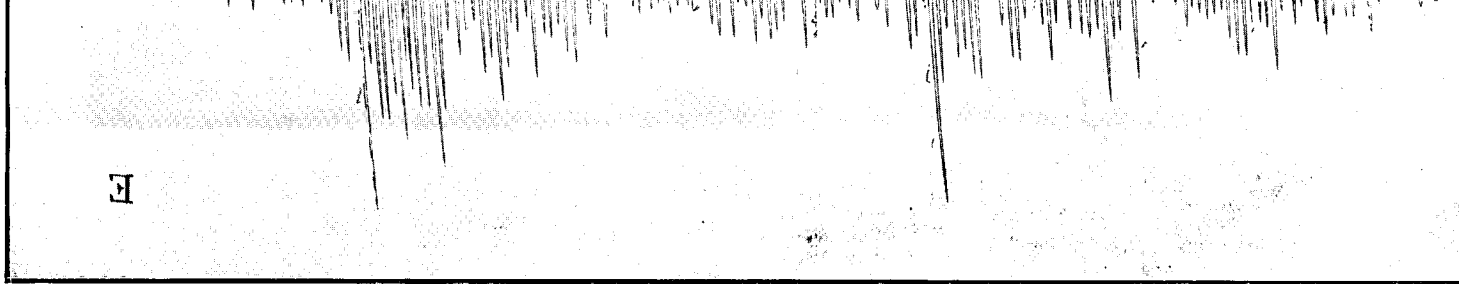


Fig. 2.

Péndulo

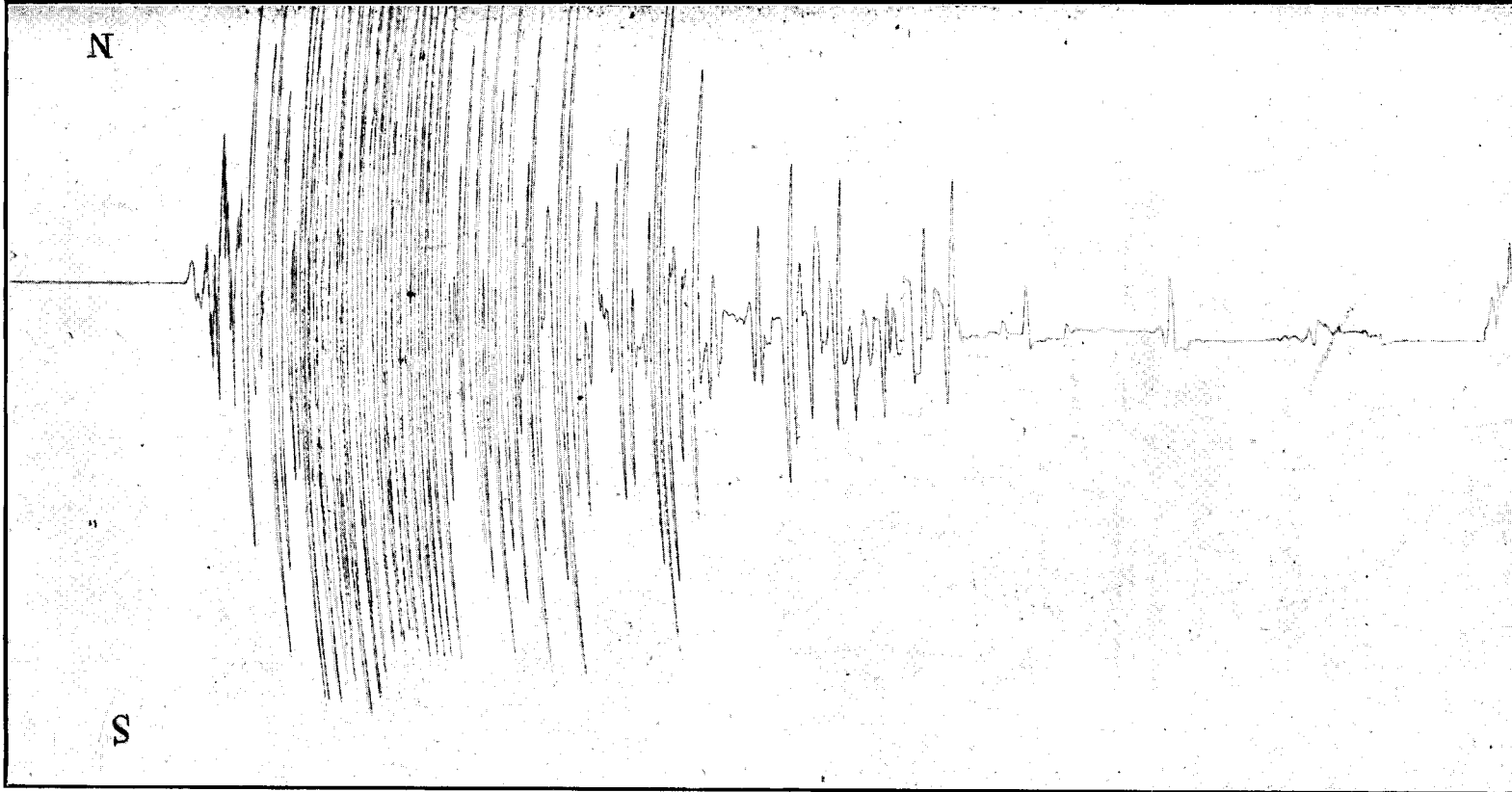


Fig. 3.

Péndulo

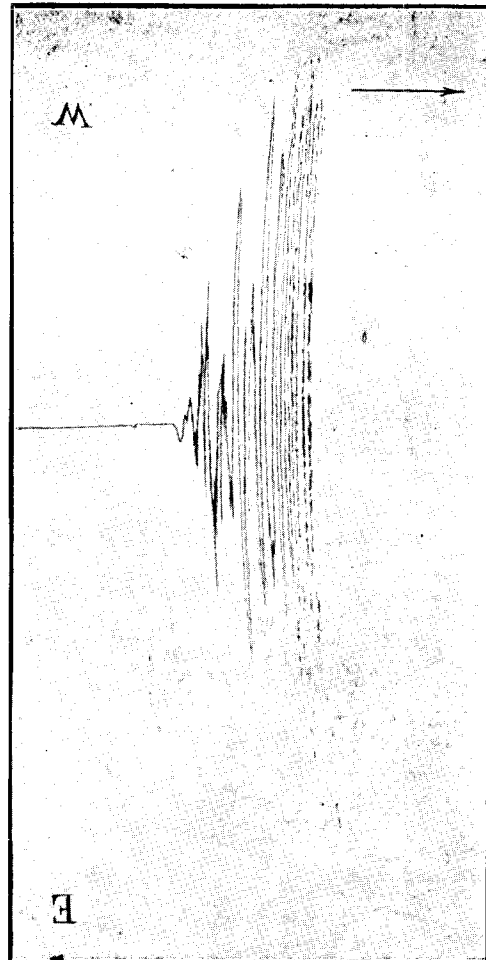


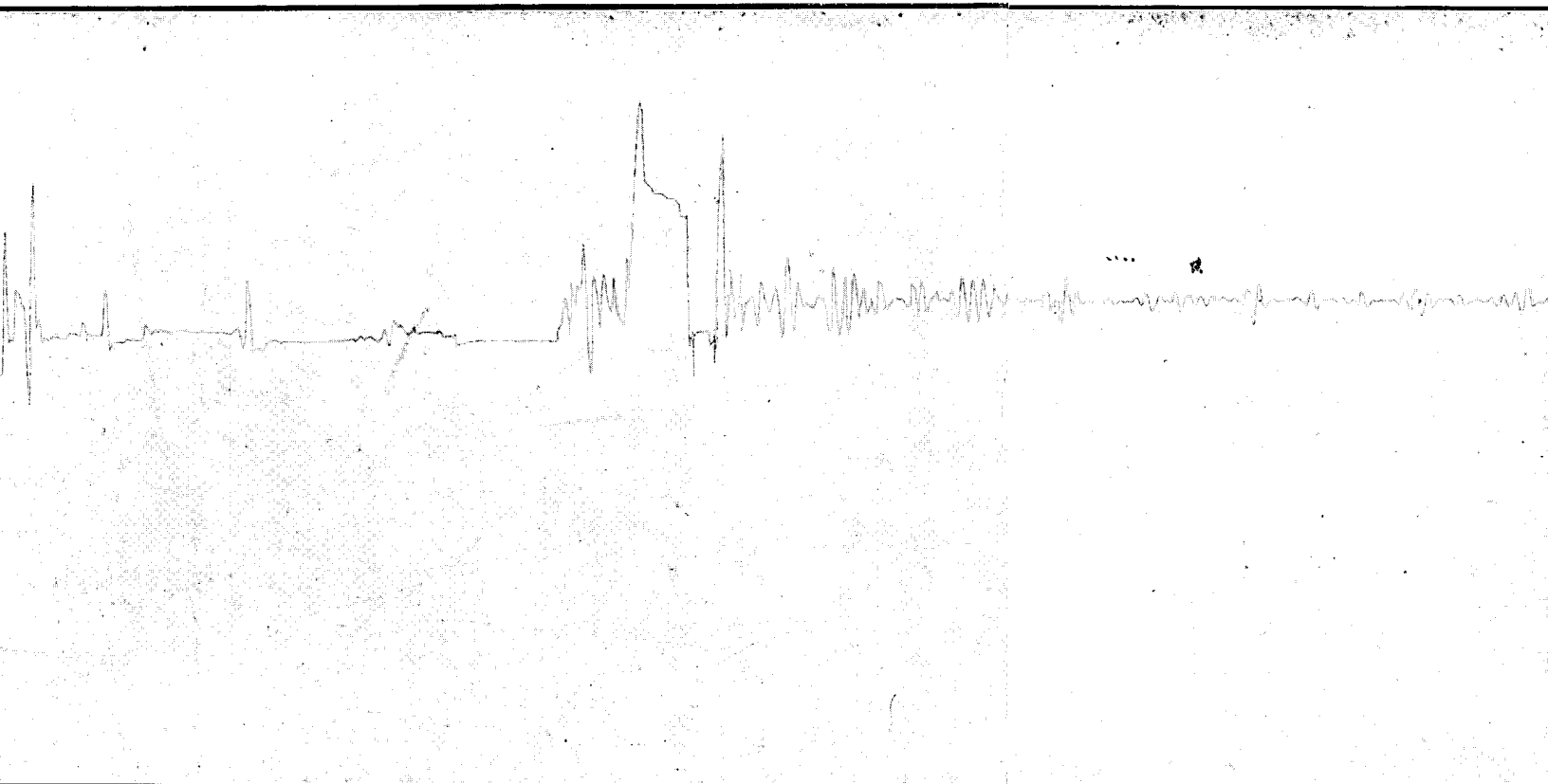
Fig. 4.

ZACAT

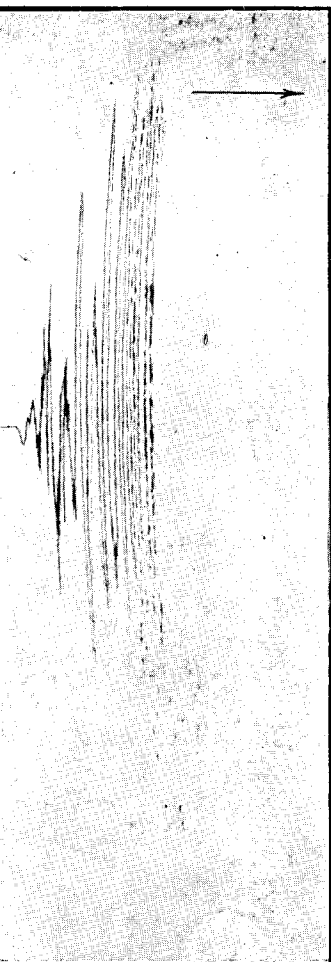
Péndulo horizontal Wiechert de 1200 kg. Componente E. W.

Péndulo horizontal Wiechert de 1200 kg. Componente E. W.

ZACATECAS.



Péndulo horizontal Wiechert de 1200 kg. Componente N. S.



ZACATECAS.

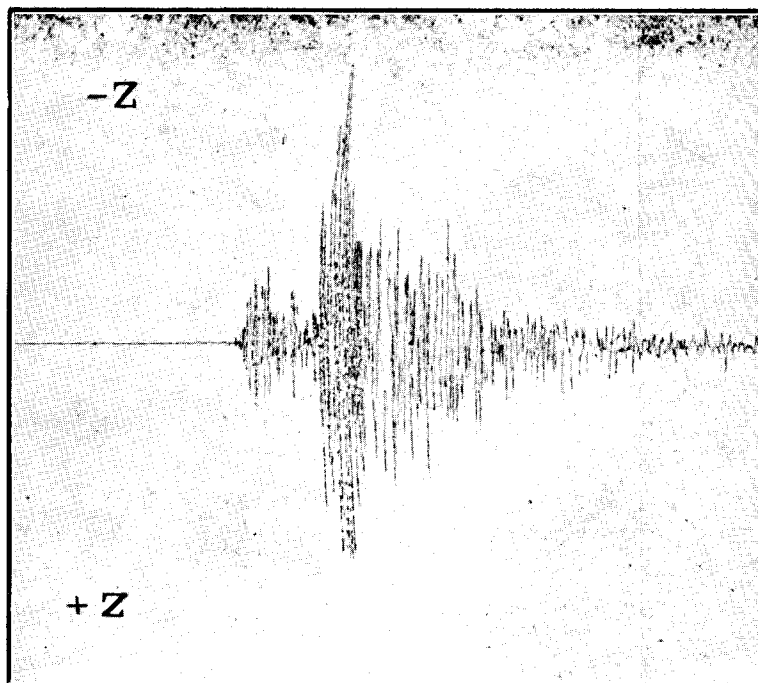
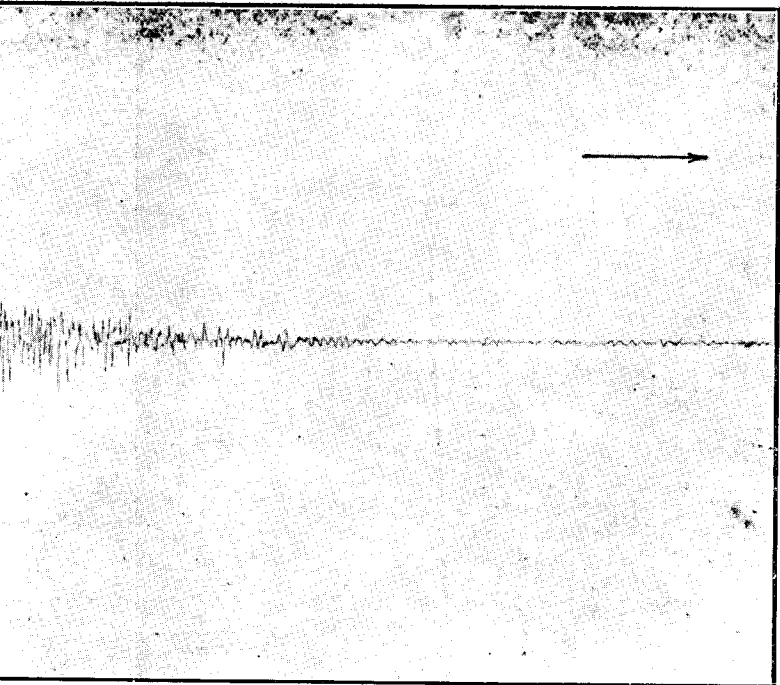
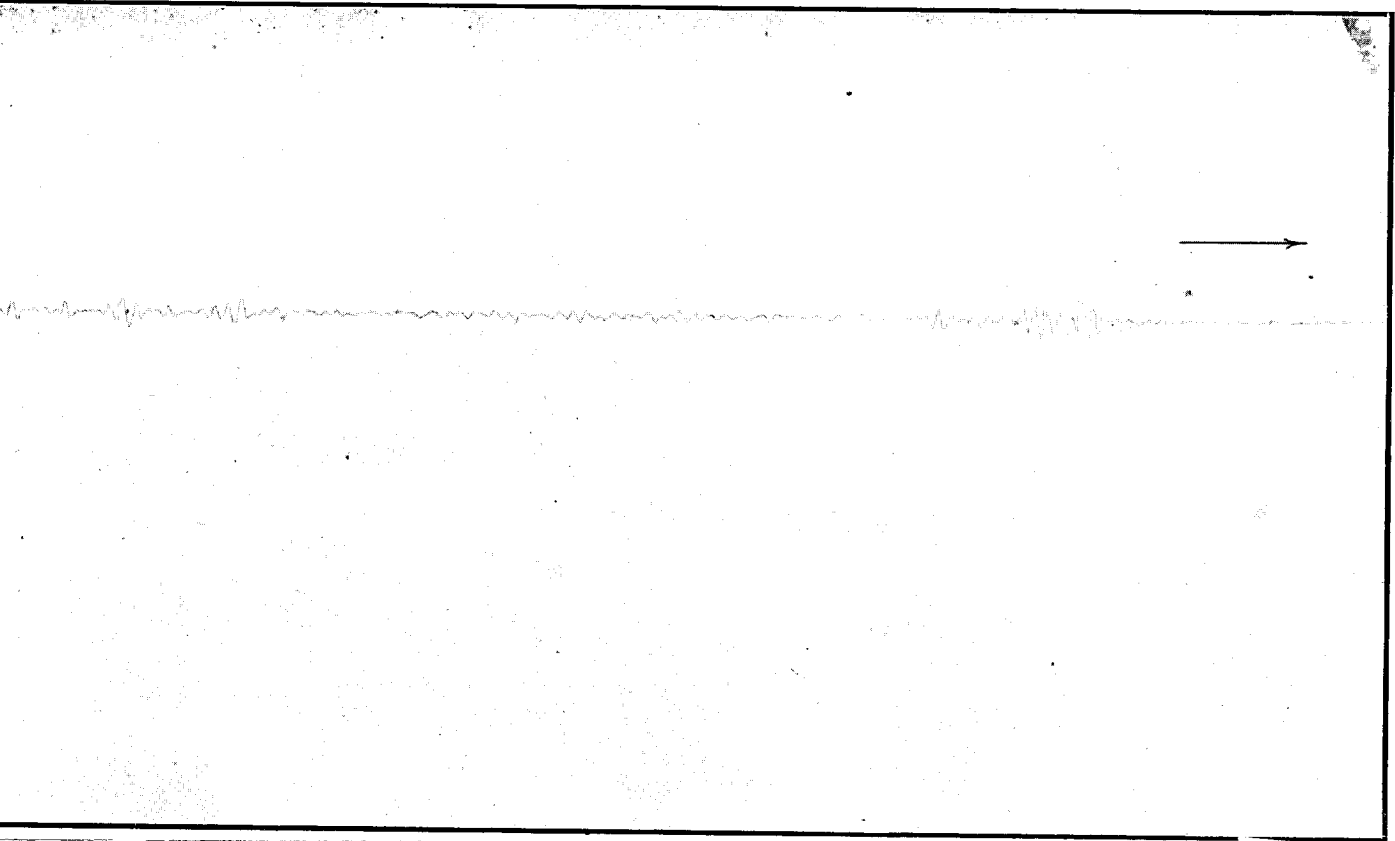
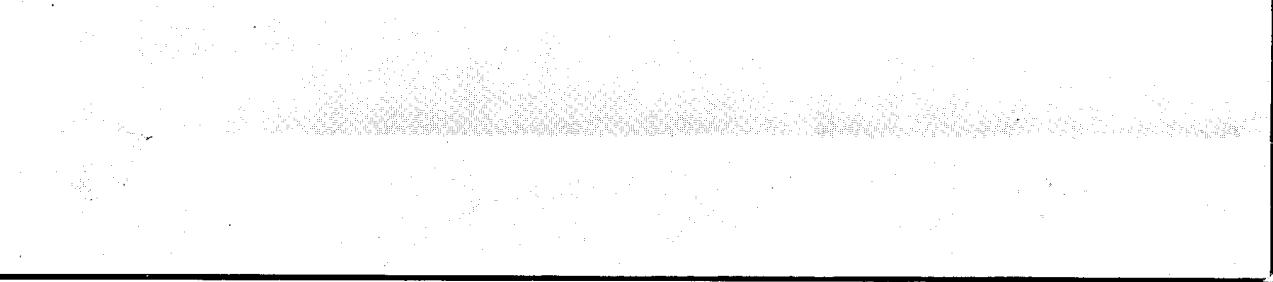


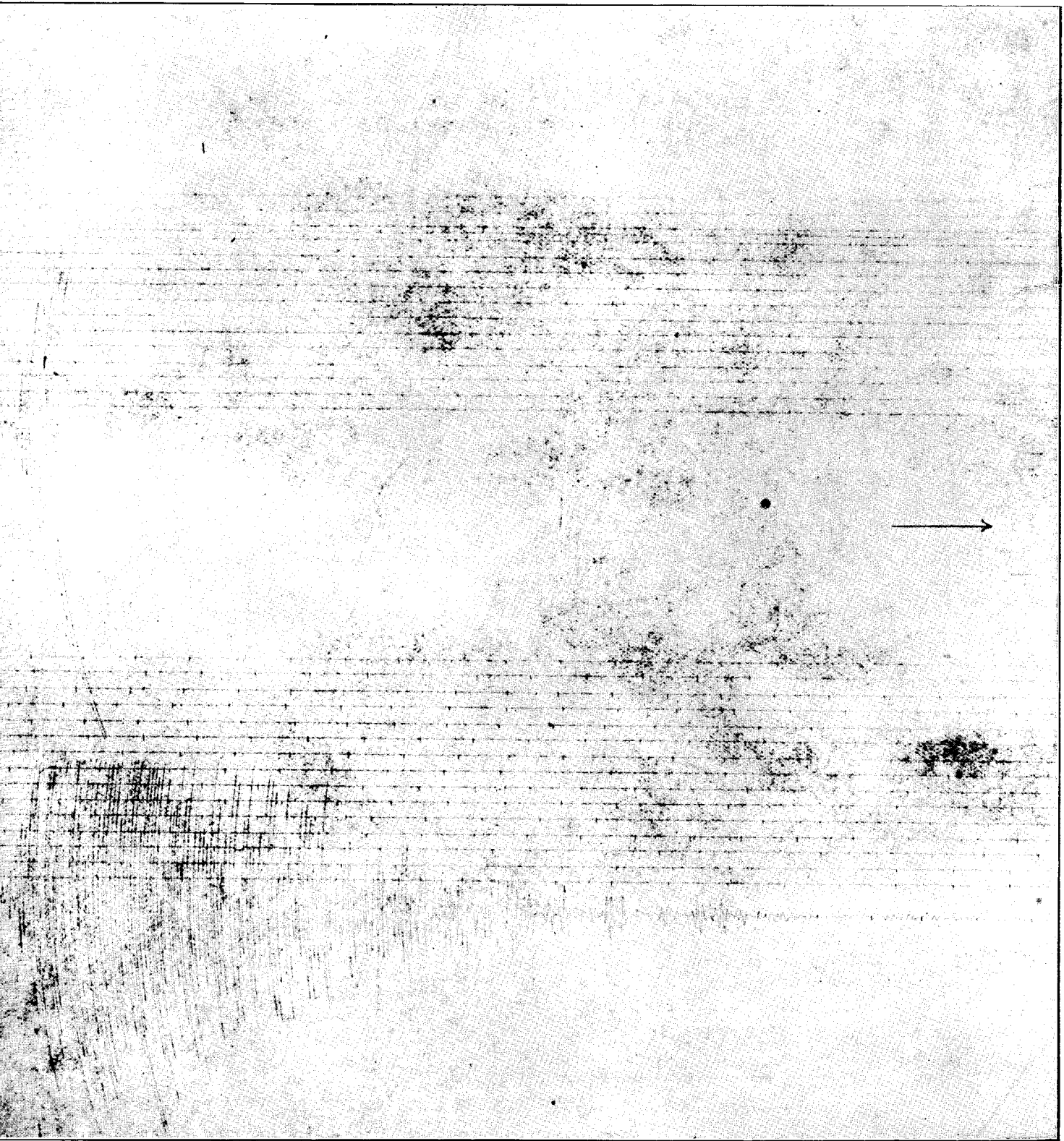
Fig. 5.

Seismógrafo vertical Wiechert

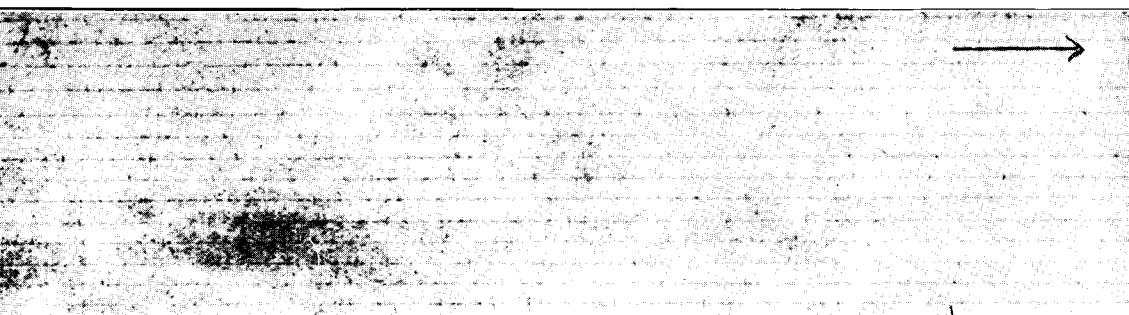
Wiechert de 1200 kg. Componente E. W.



afoto vertical Wiechert de 1300 kg.



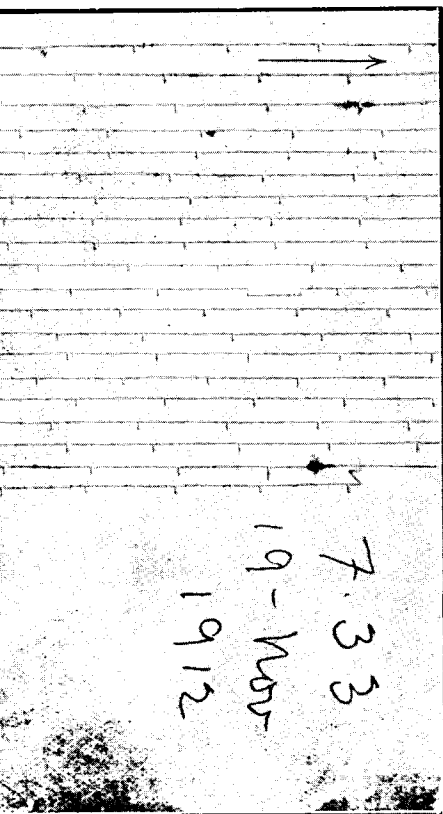
Figs. 2 y 3. Péndulo horizontal Wiechert de 200 kg.



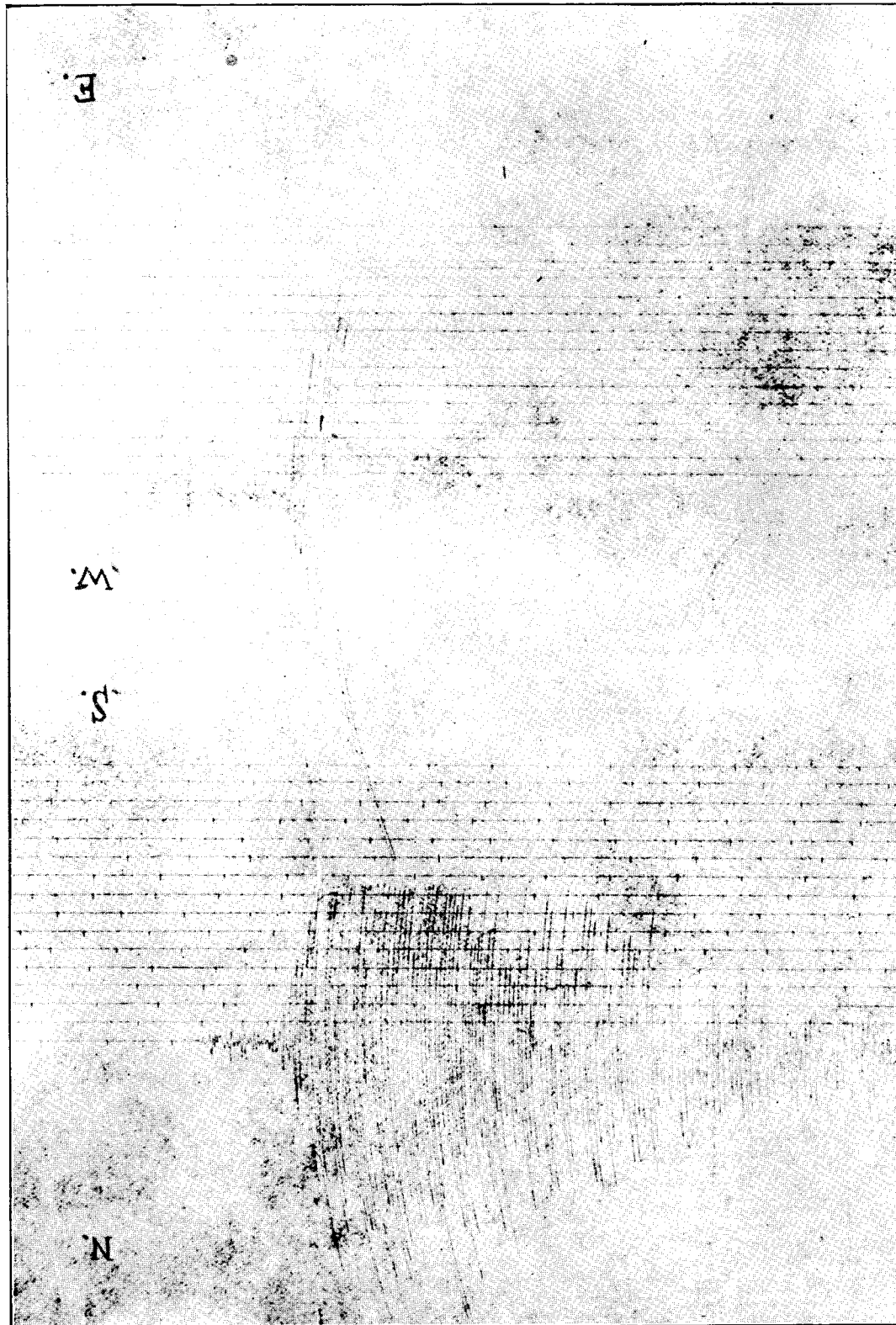
INSTITUTO GEOLOGICO DE MEXICO.

ESTACIONES DE SEGUNDO ORDEN.

MAZATLAN



Componente E. W.



Figs. 2 y 3. Péndulo horizontal Wiecher

MAZATLAN



GUADALAJARA

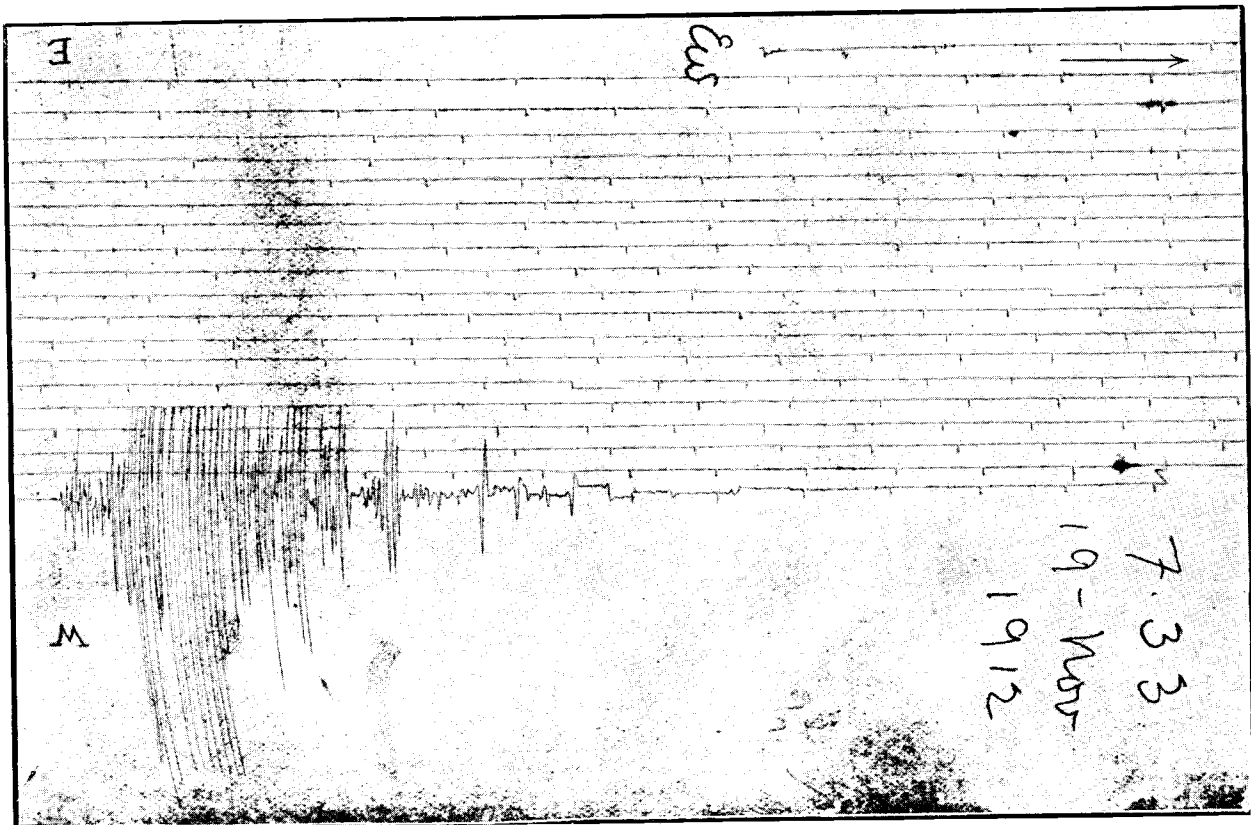
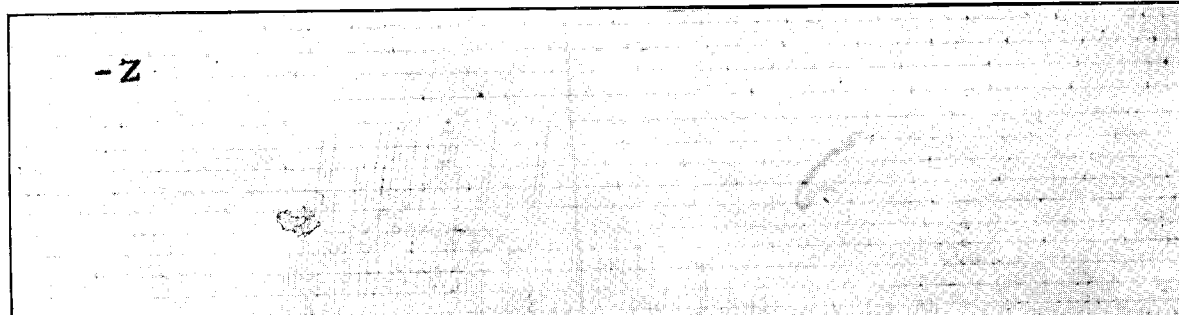


Fig. 1. Péndulo horizontal Wiechert de 125 kg. Componente E. W.



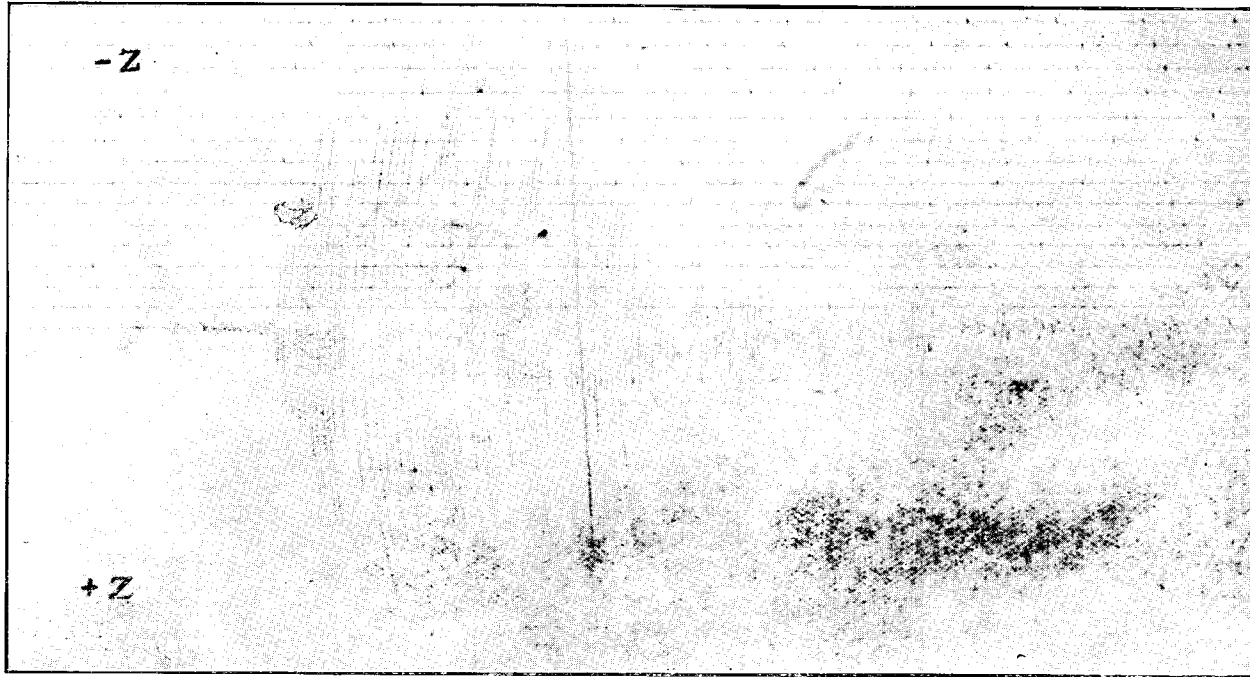
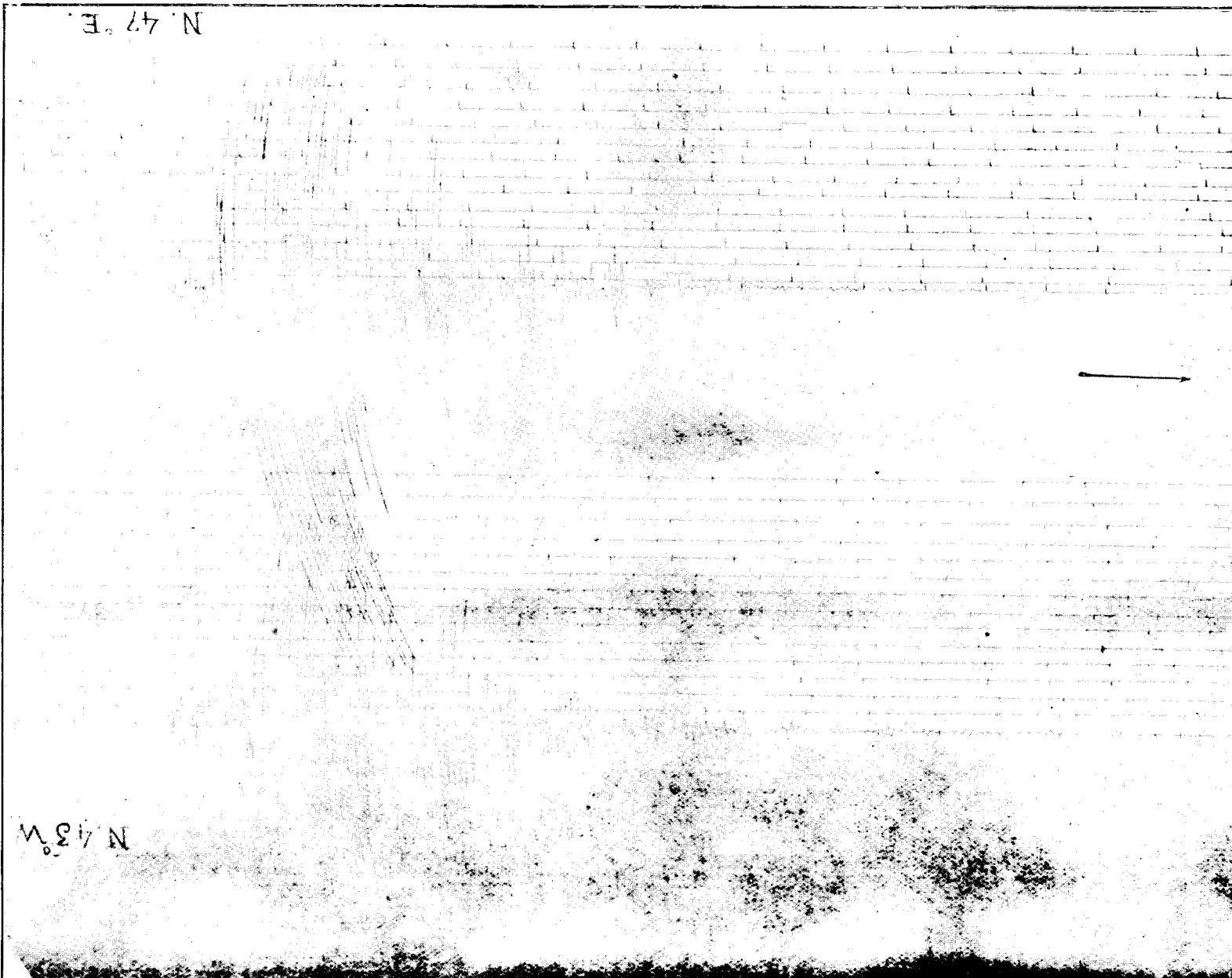


Fig. 4. Seismógrafo vert

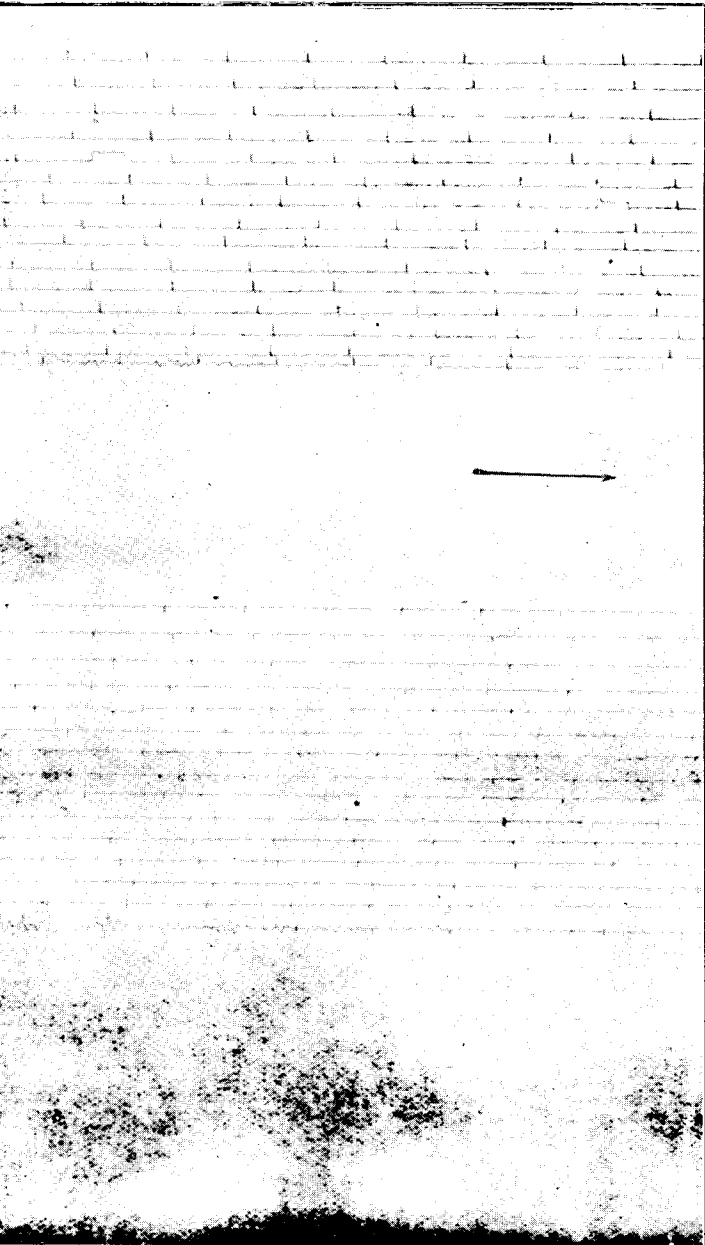
OAXACA



Figs. 5 y 6. Péndulo horizontal Wiechert de 200 kg.



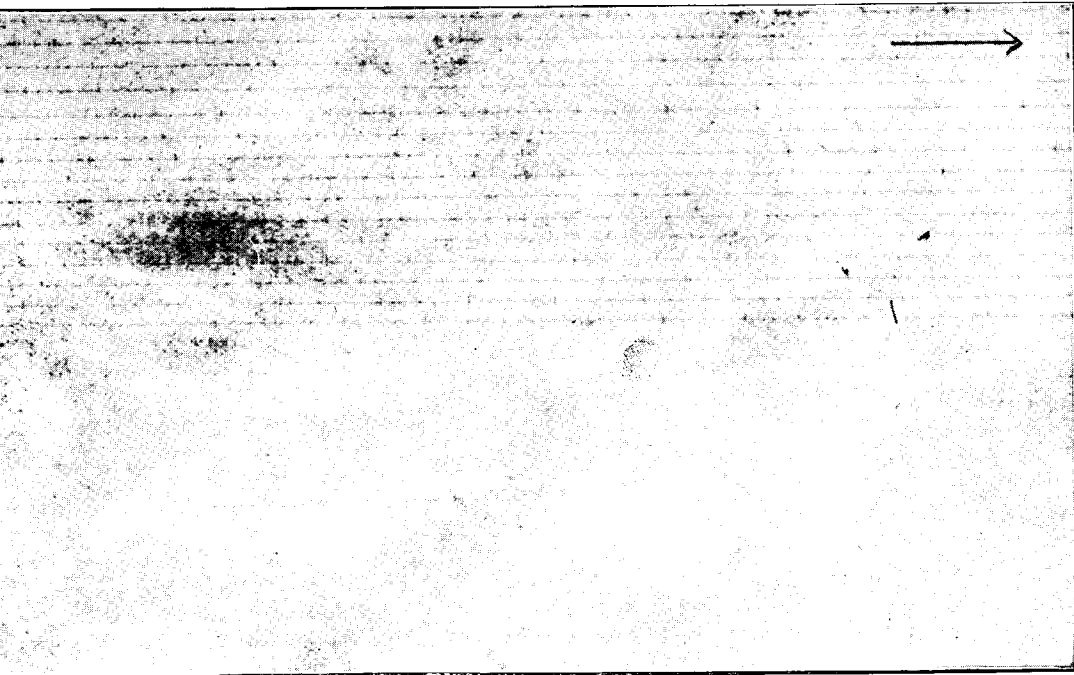
Fig. 4. Seismógrafo vertical Wiechert de 80 kg.



Wiechert de 200 kg.



Fig



de 80 kg.

OAXACA

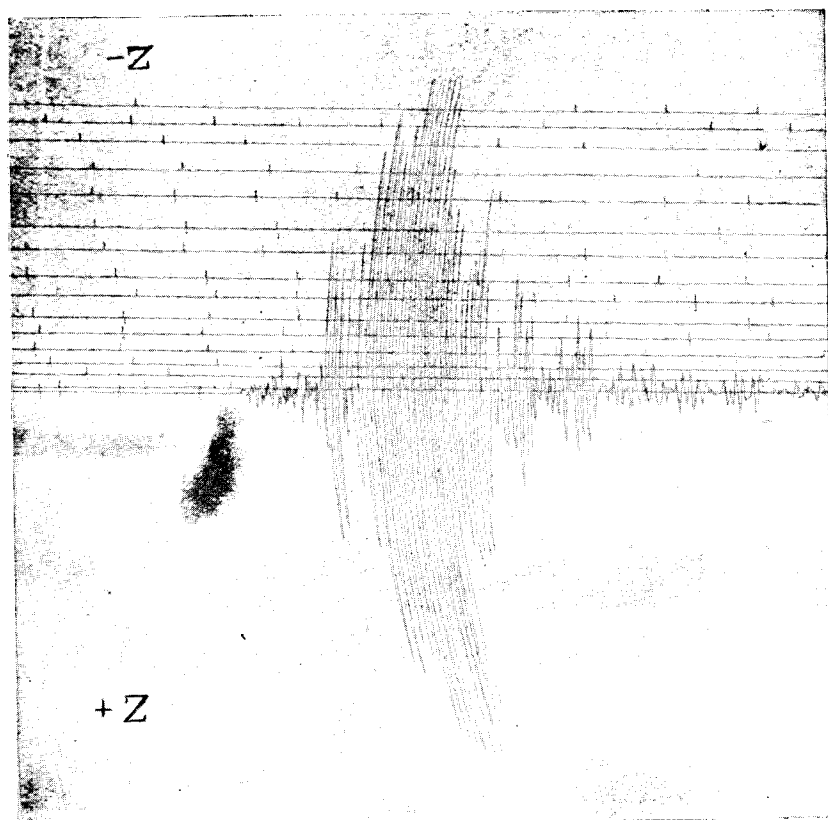
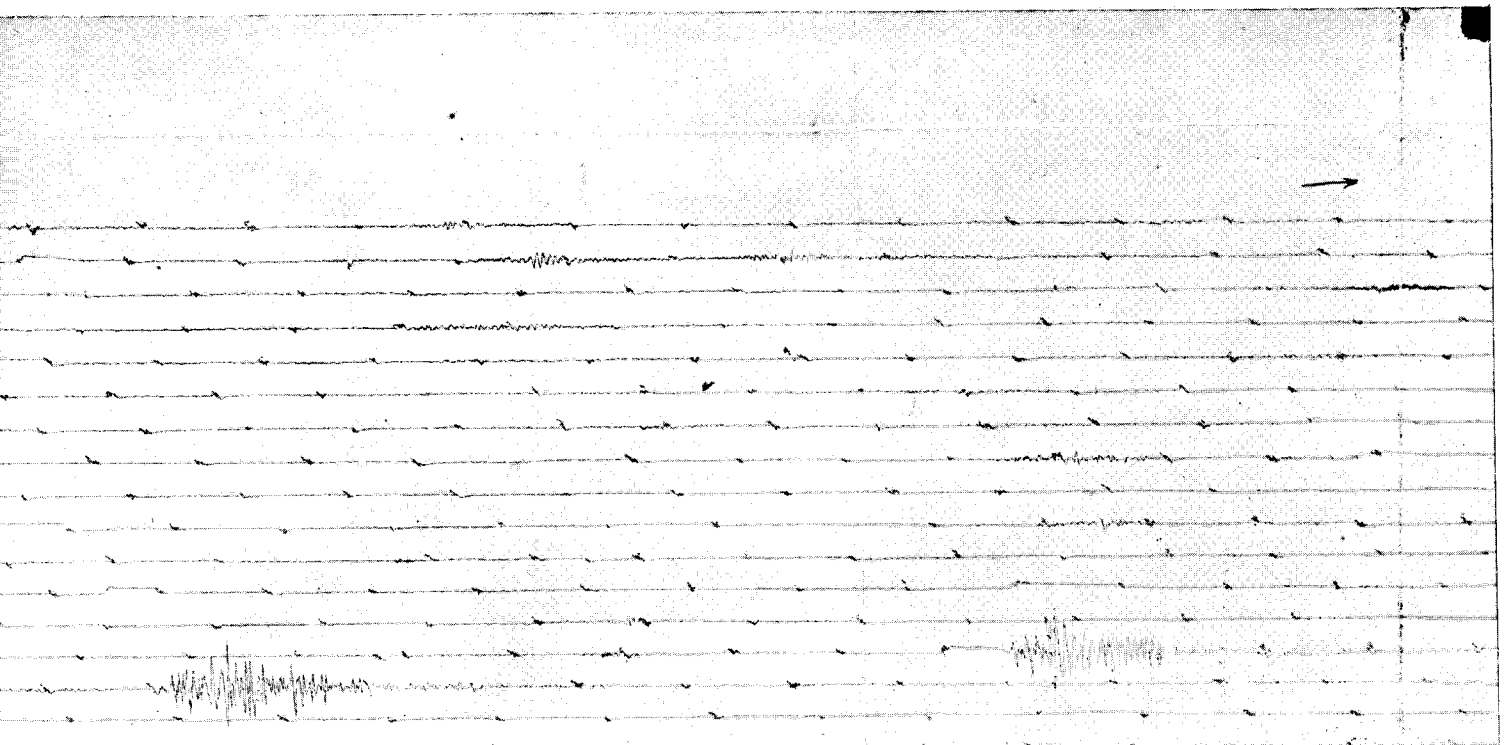
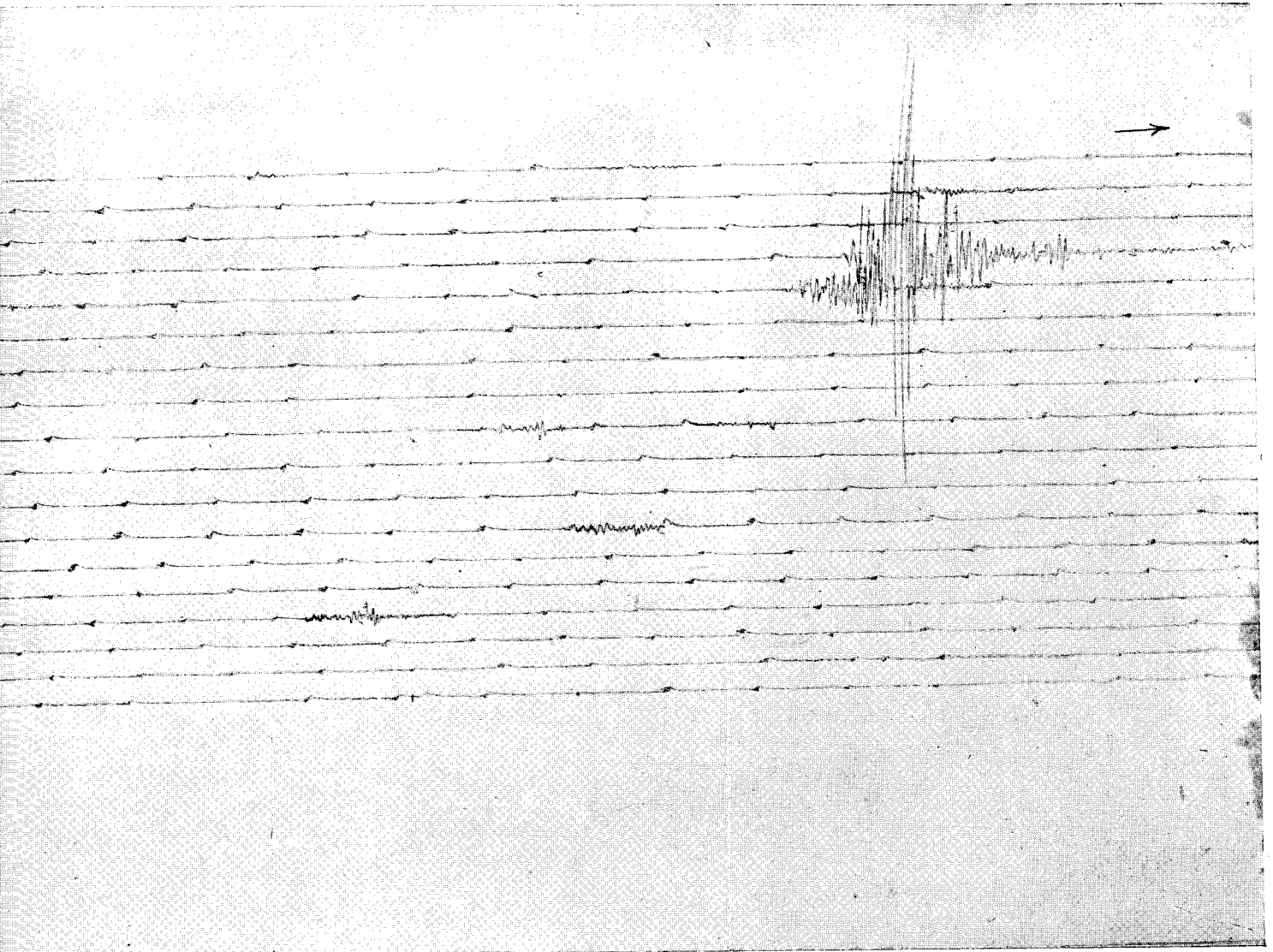


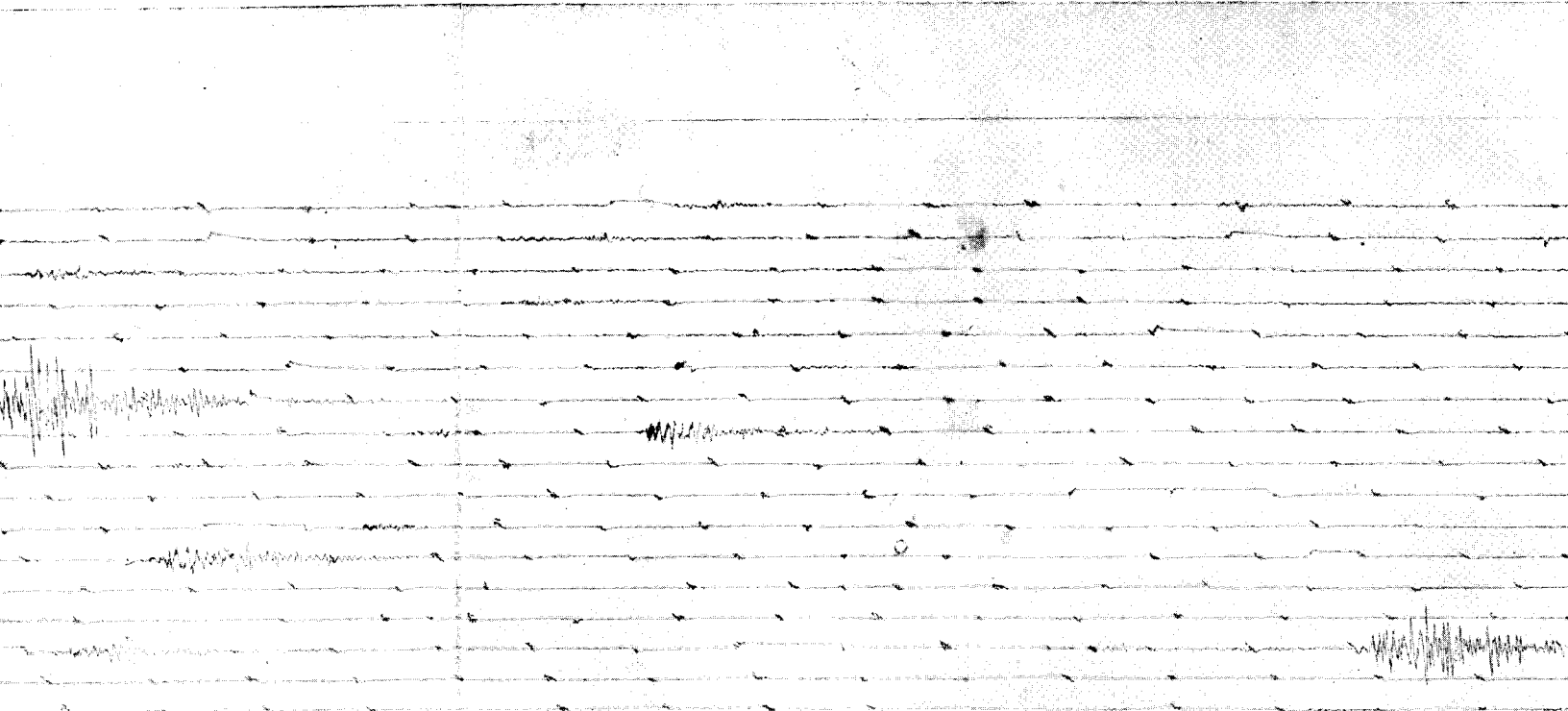
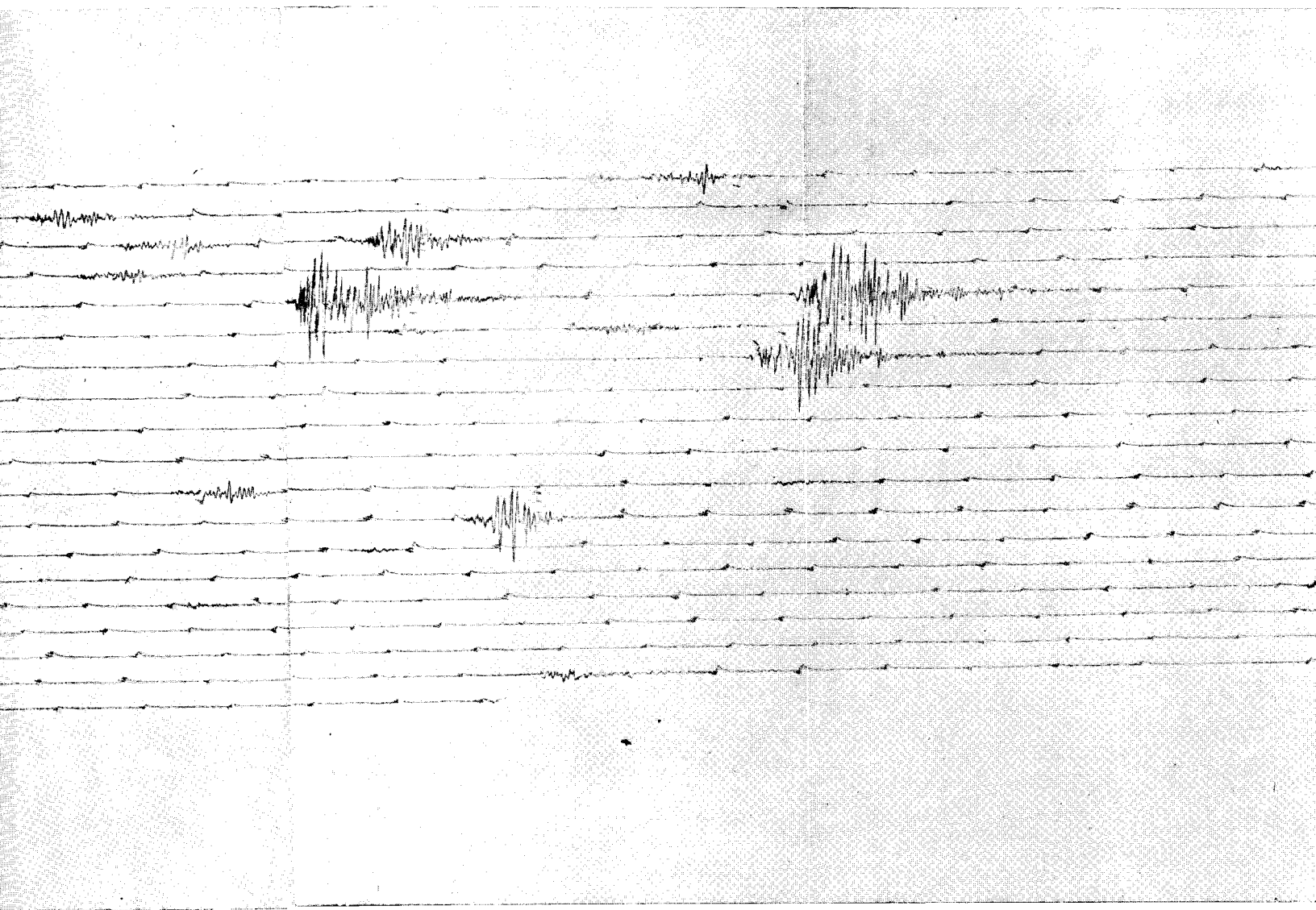
Fig. 7. Seismógrafo vertical de 80 kg.

DE 1200 KG.



ICO.

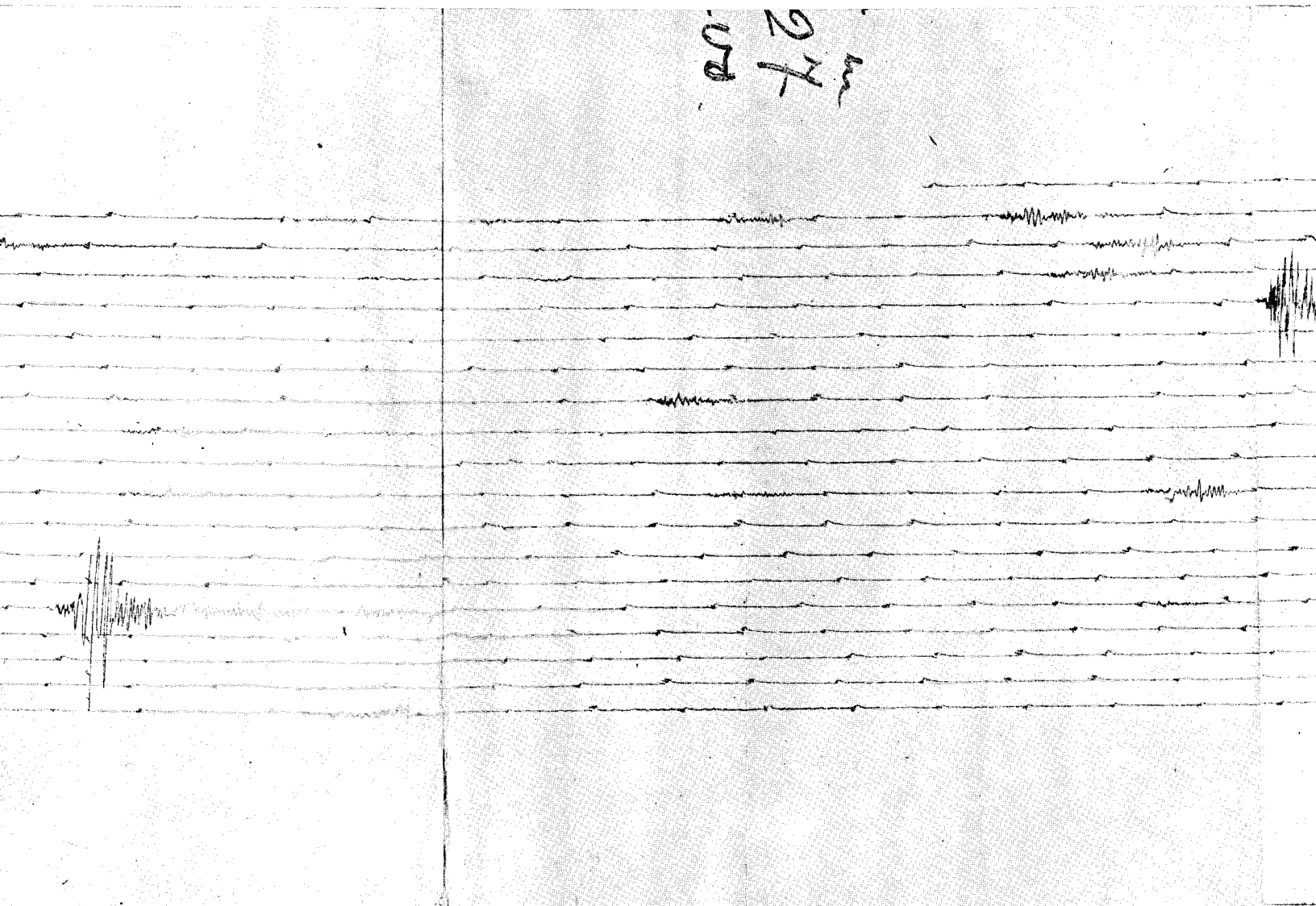
MBRE, POR EL PENDULO HORIZONTAL WIECHERT DE 1200 KG.



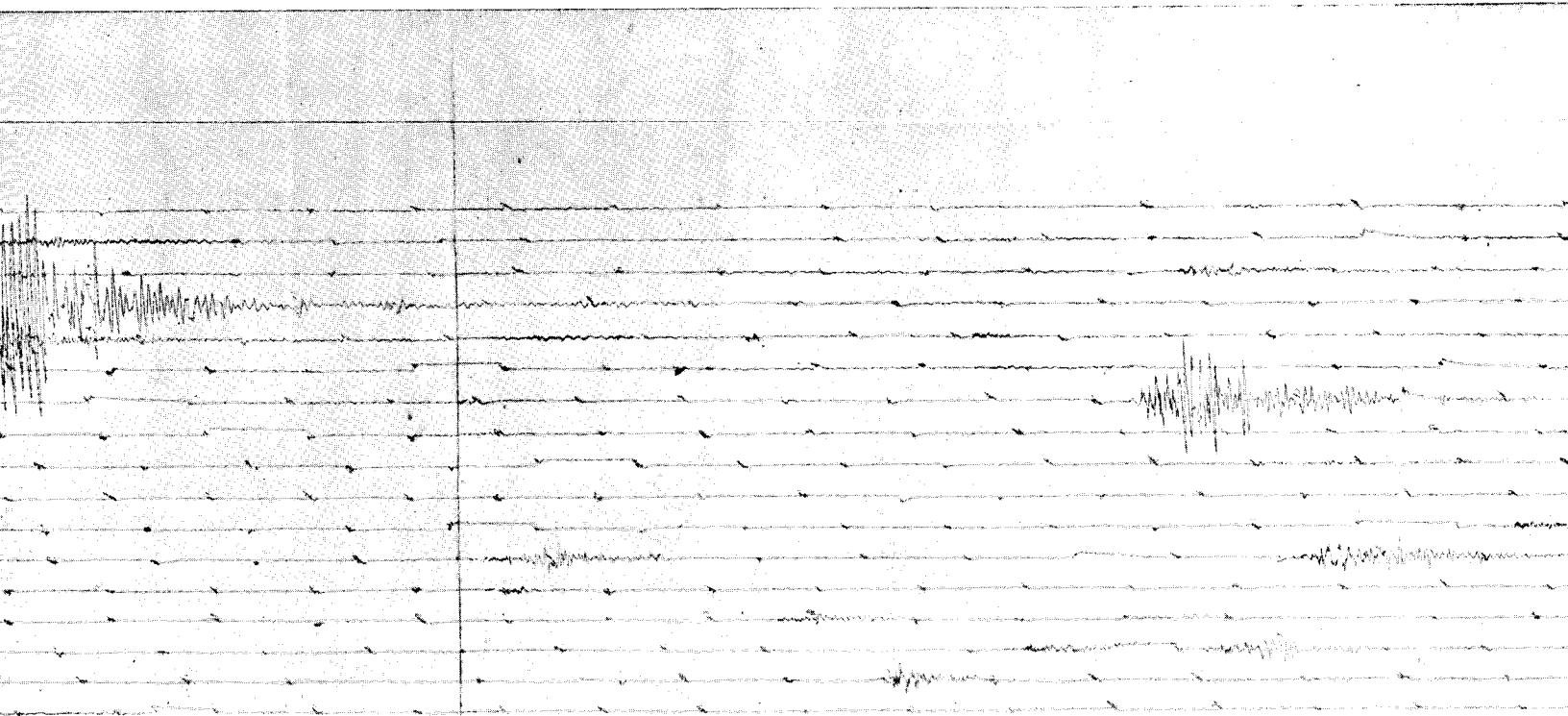
INSTITUTO GEOLOGICO DE MEXICO.

ESTACION SEISMOLOGICA CENTRAL. TACUBAYA, D. F.

DE 1912, REGISTRADOS DEL 19 AL 20 DE NOVIEMBRE, POR EL PE  
COMPONENTE E. W.



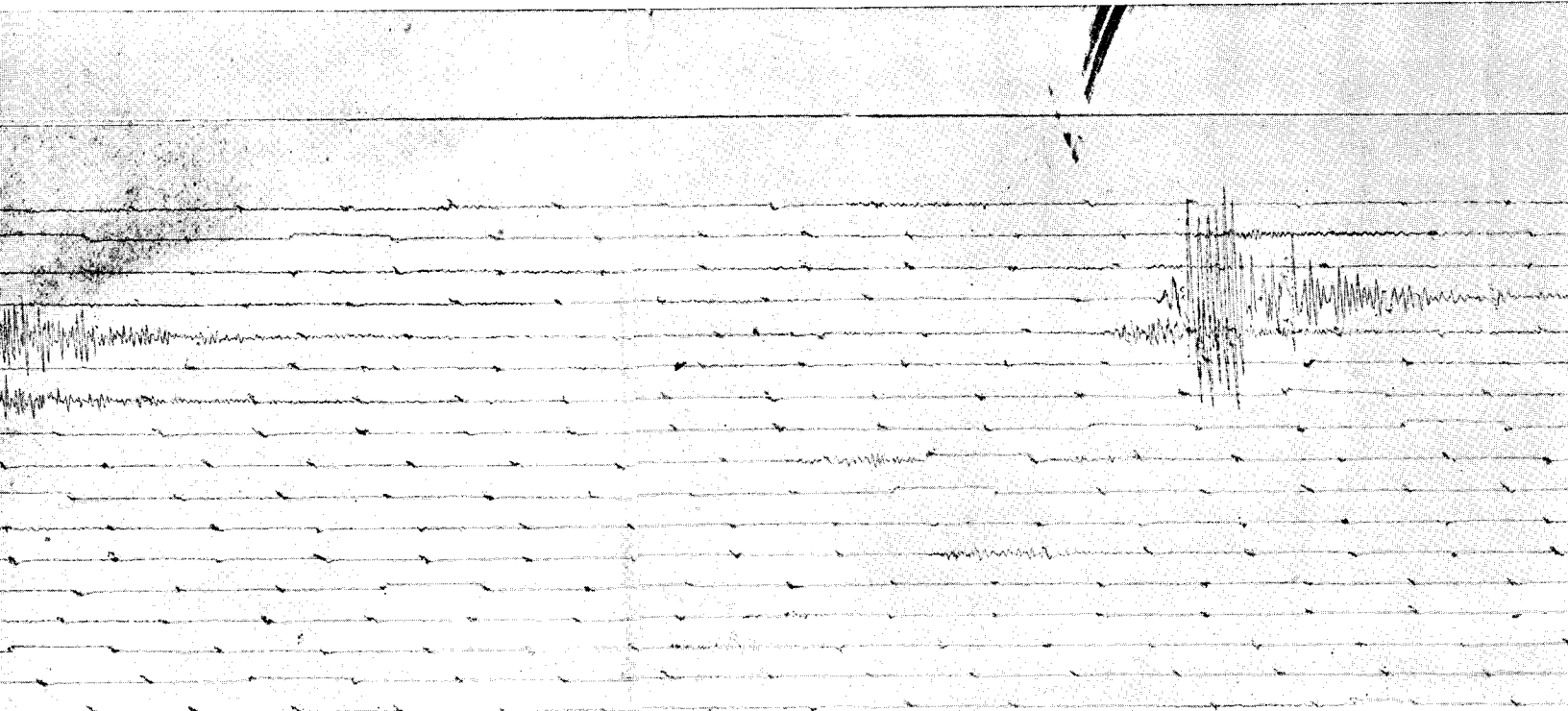
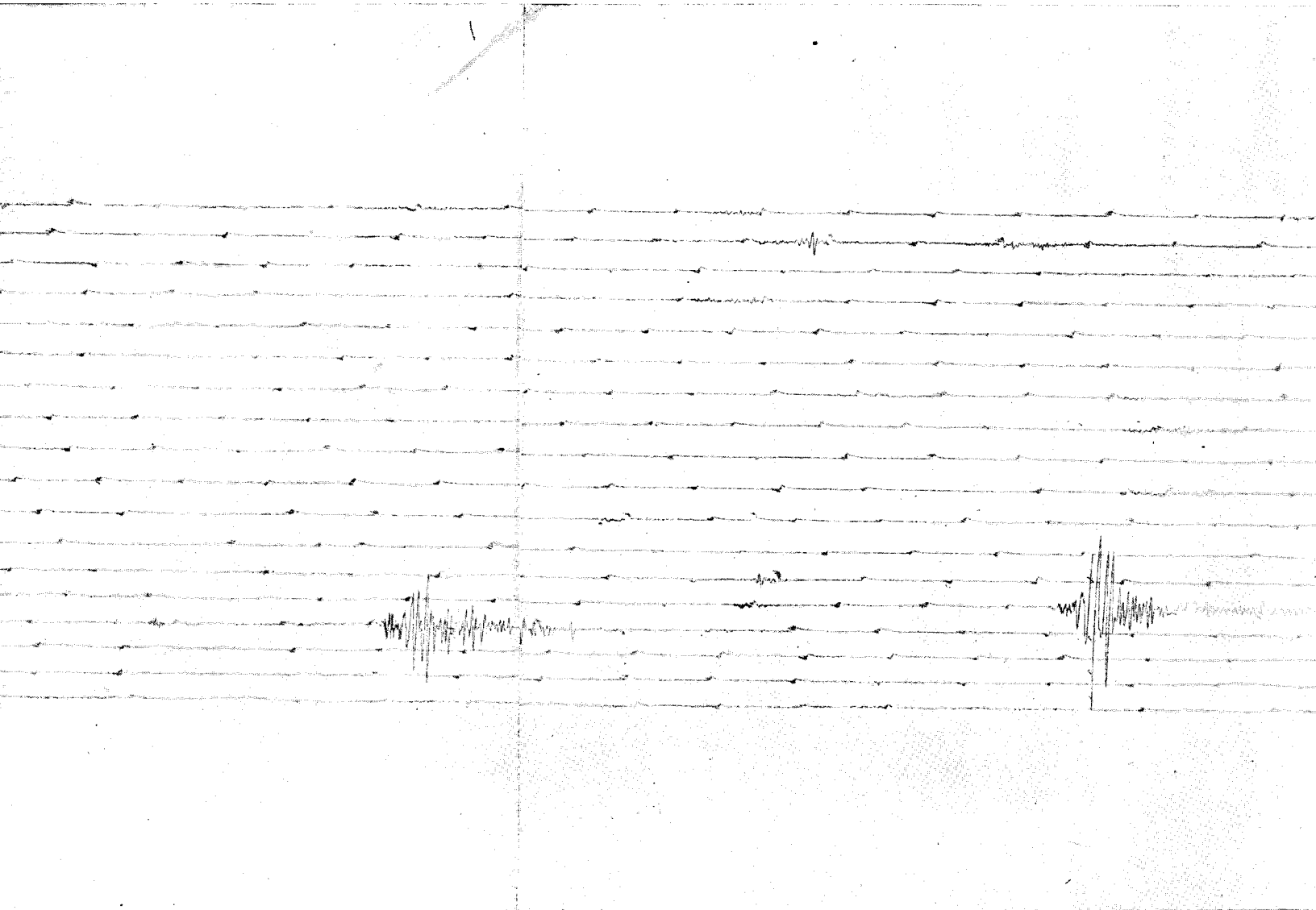
COMPONENTE N. S.



INSTITUTO G

ESTACION SEISM

CUENTAS DEL TEMBLOR DEL 19 DE NOVIEMBRE DE 1912, REGIST





CHOQUES SUBSECUENTES DEL TEMBLO

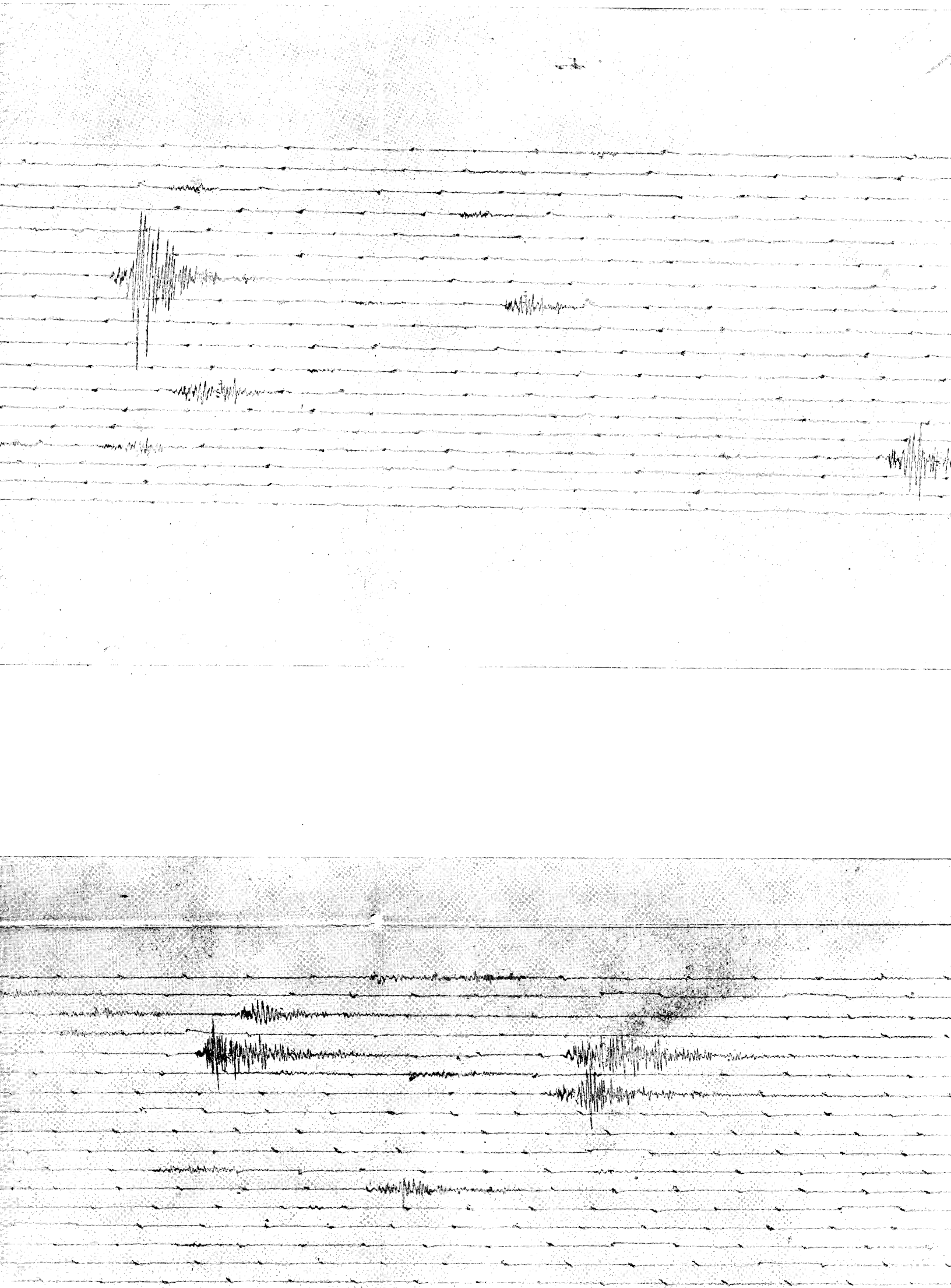


Fig. 1

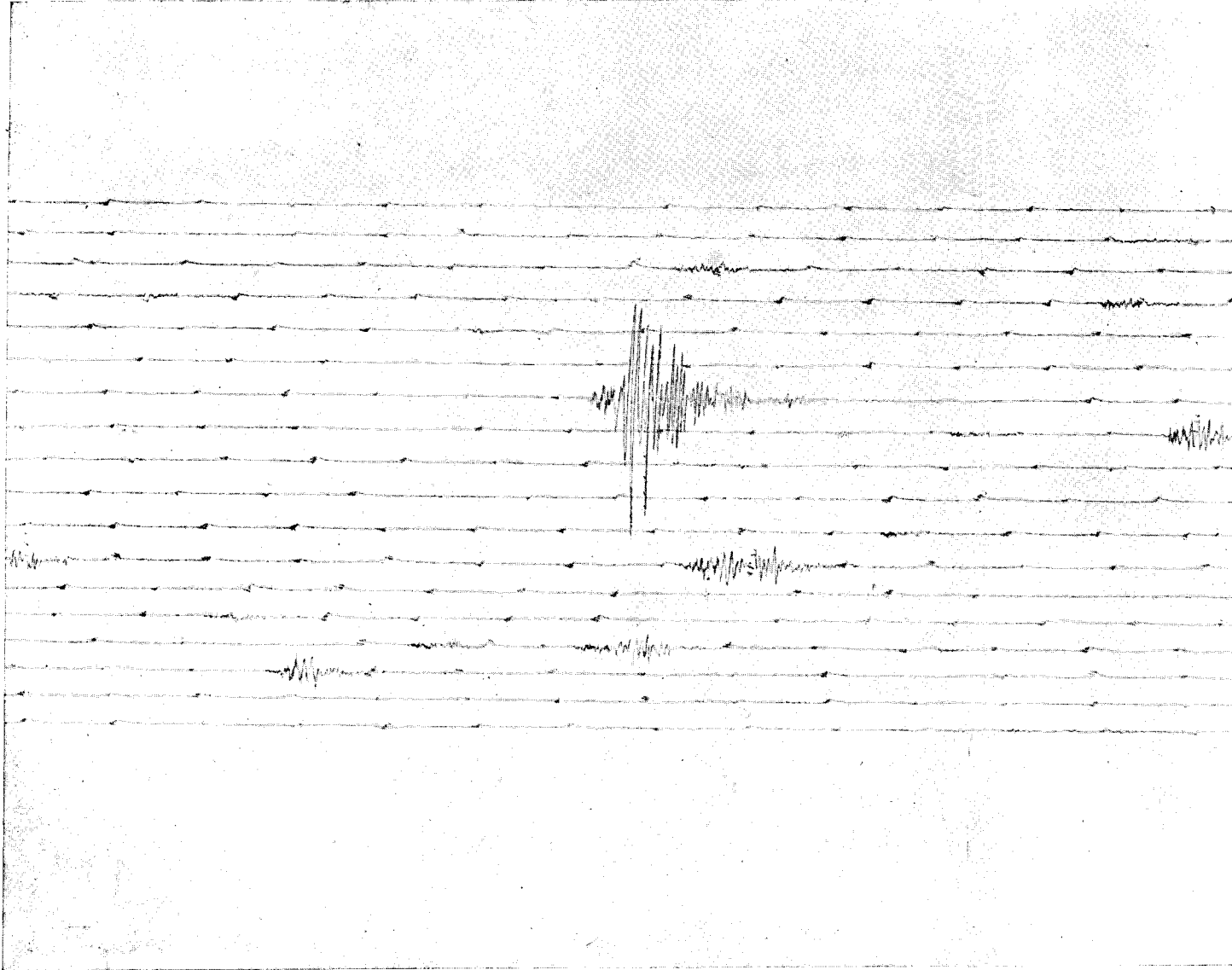
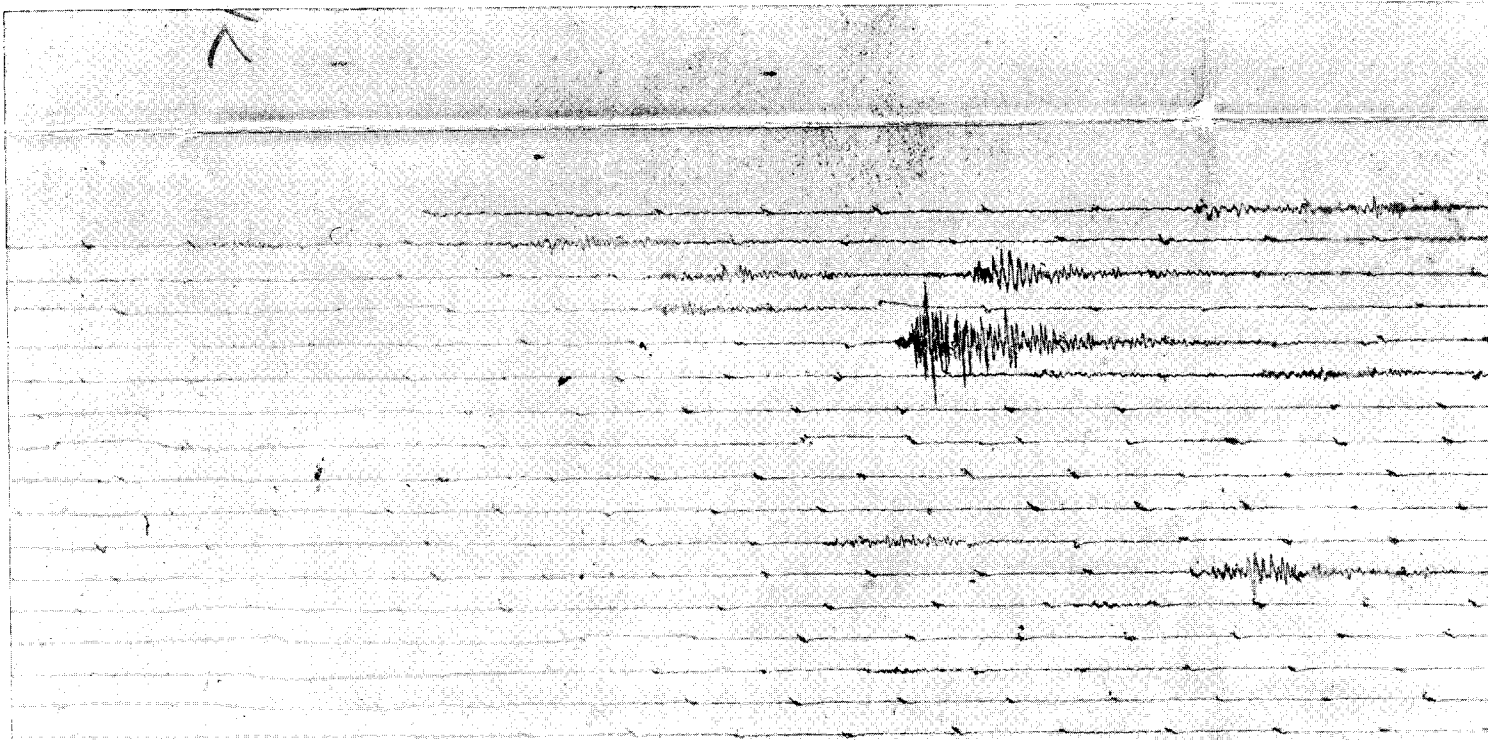
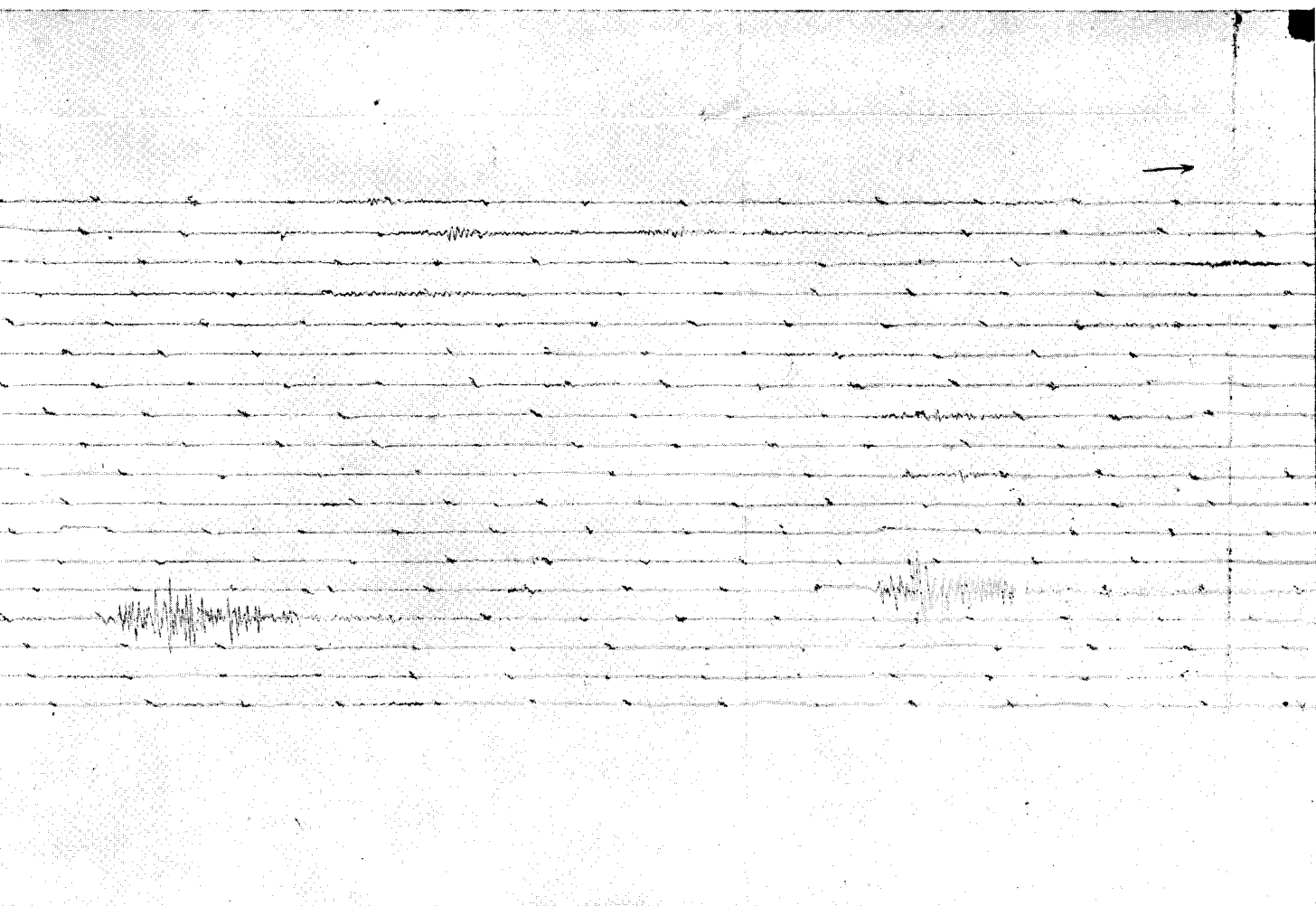
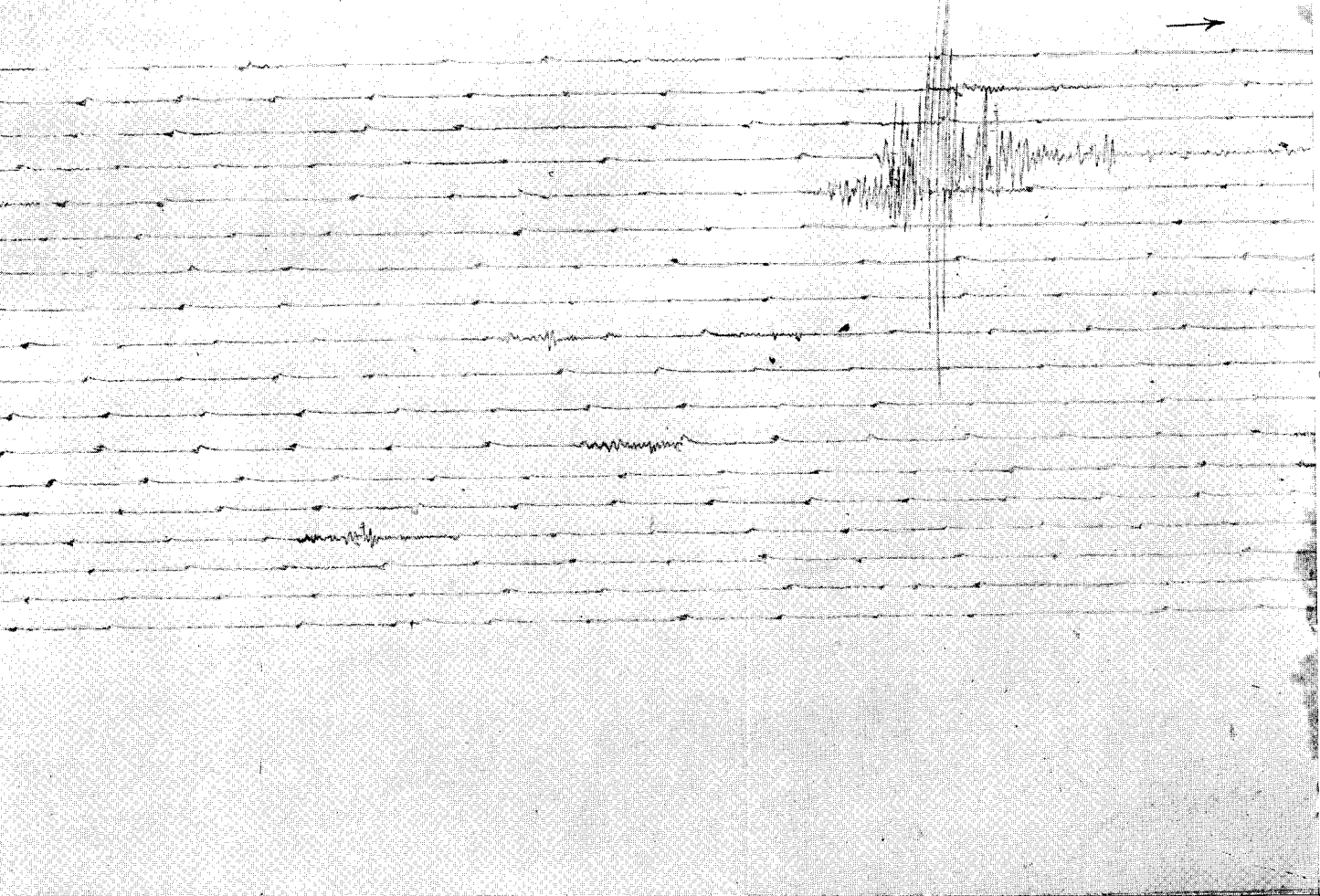
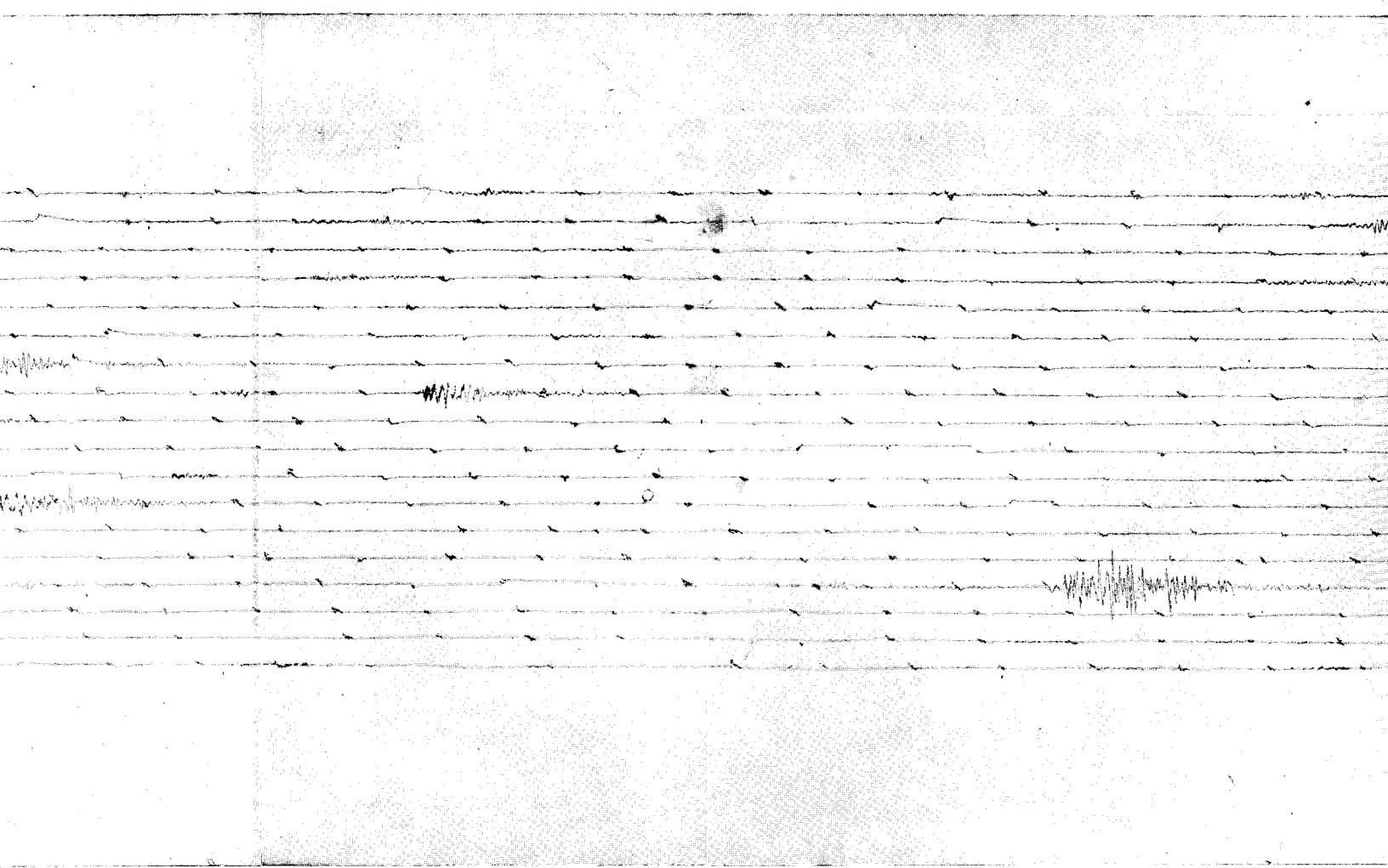
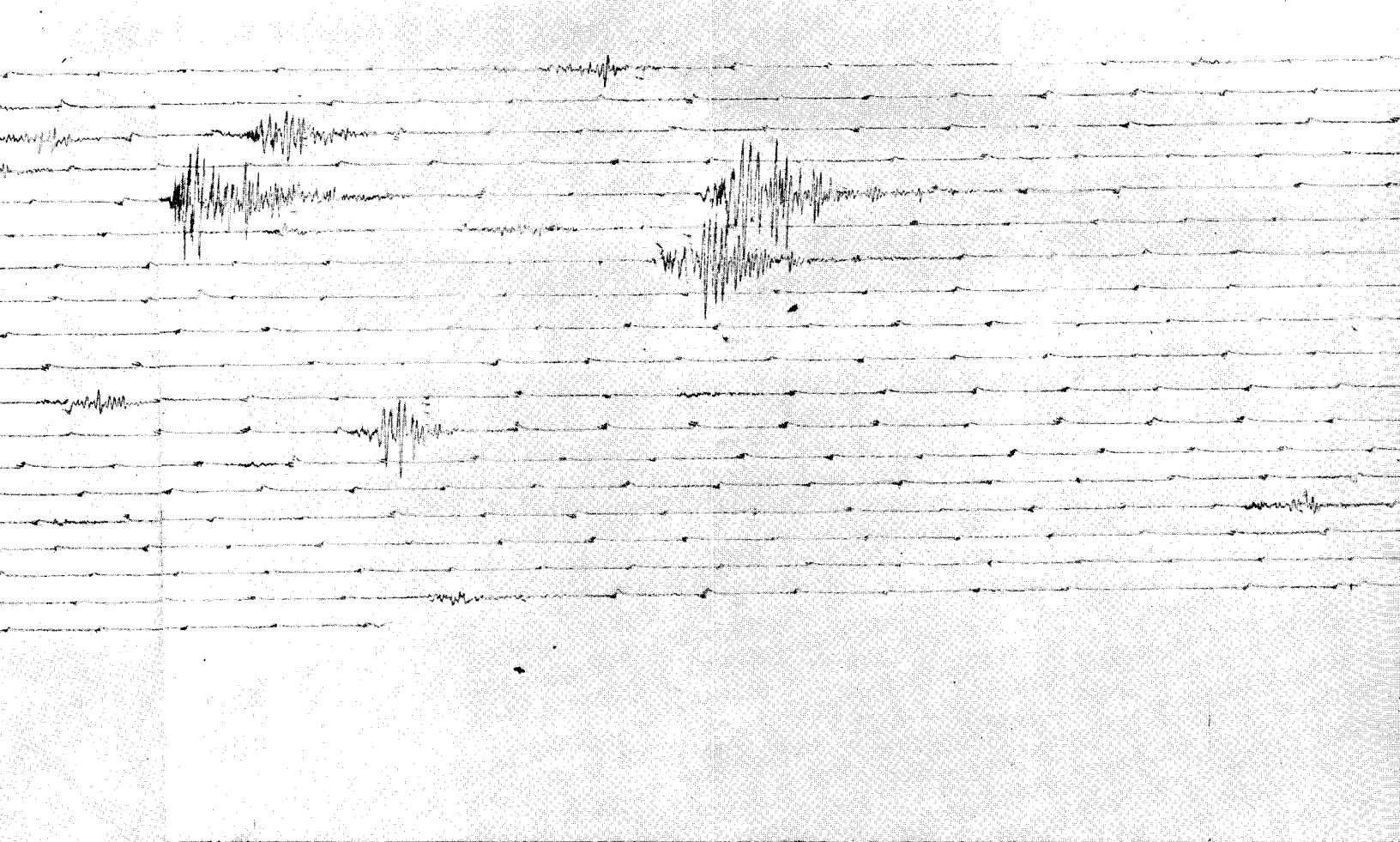
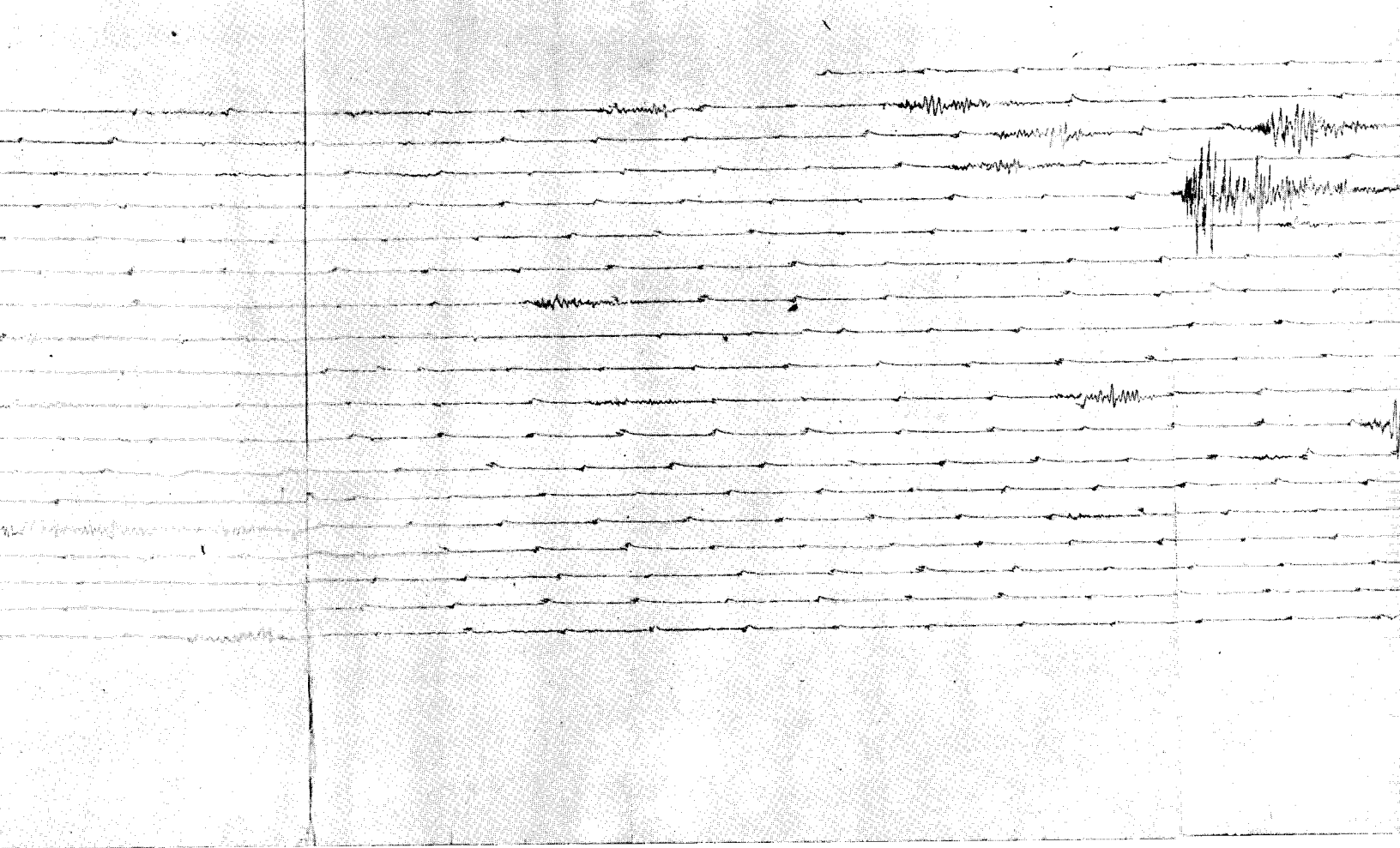


Fig. 2

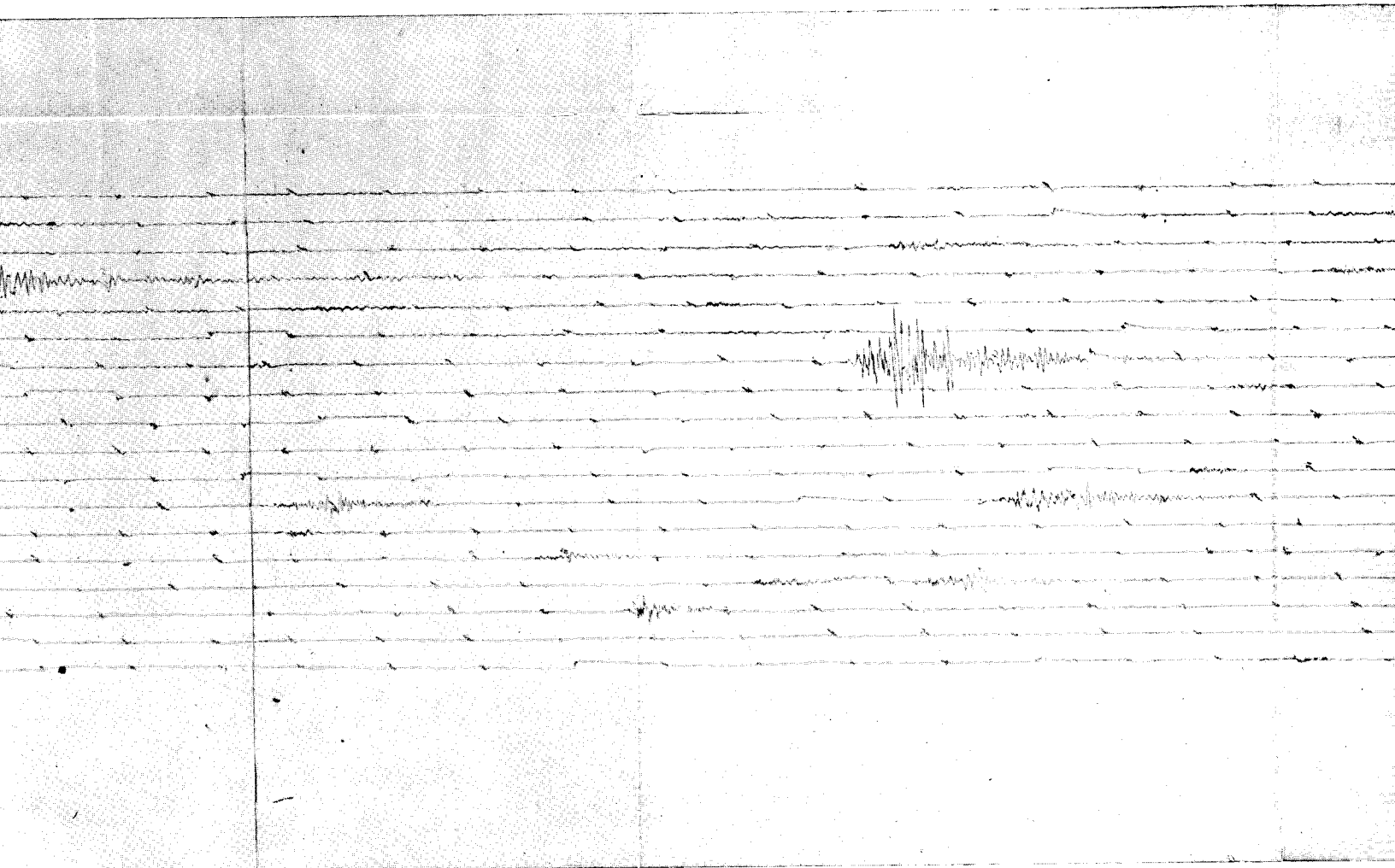


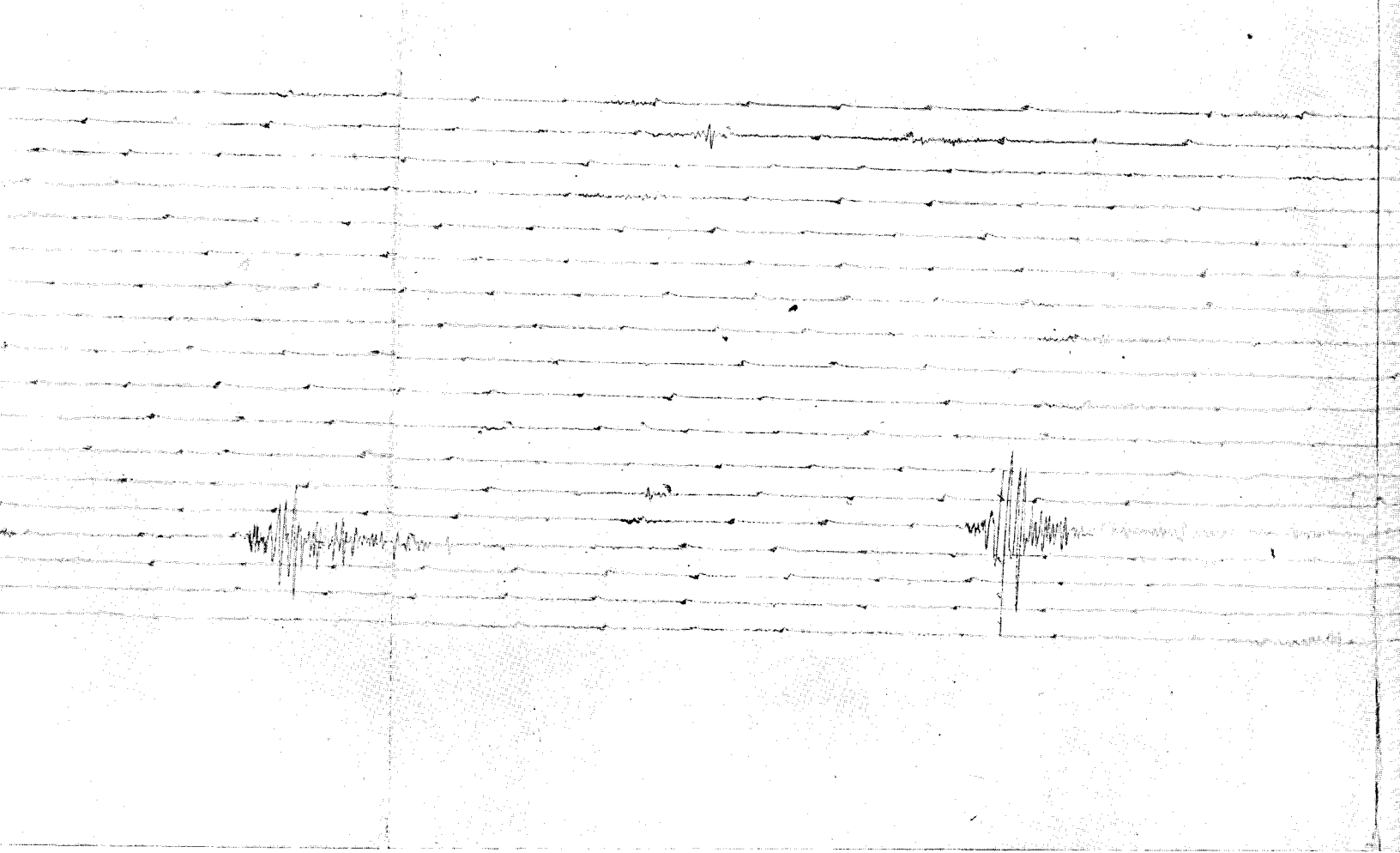




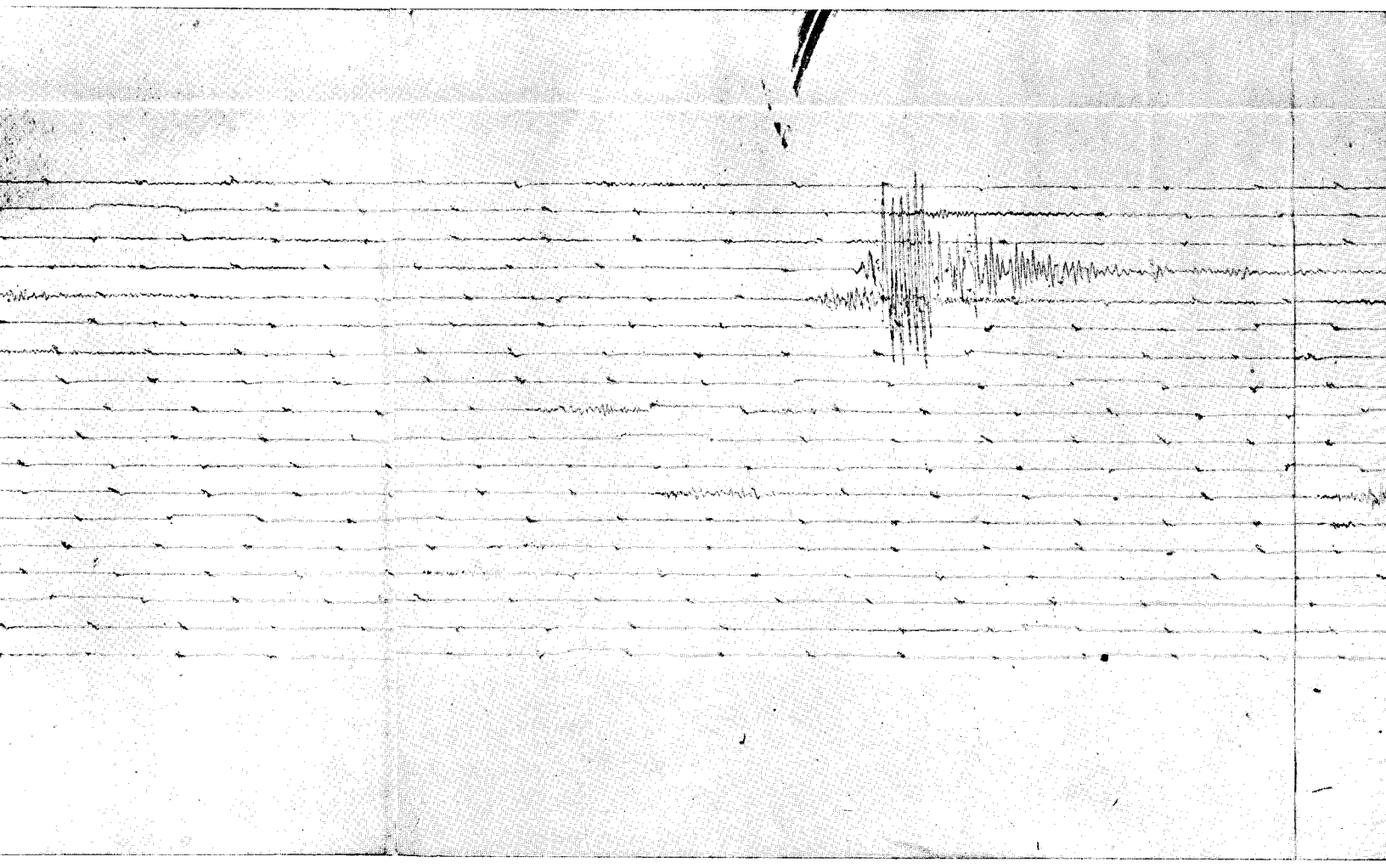


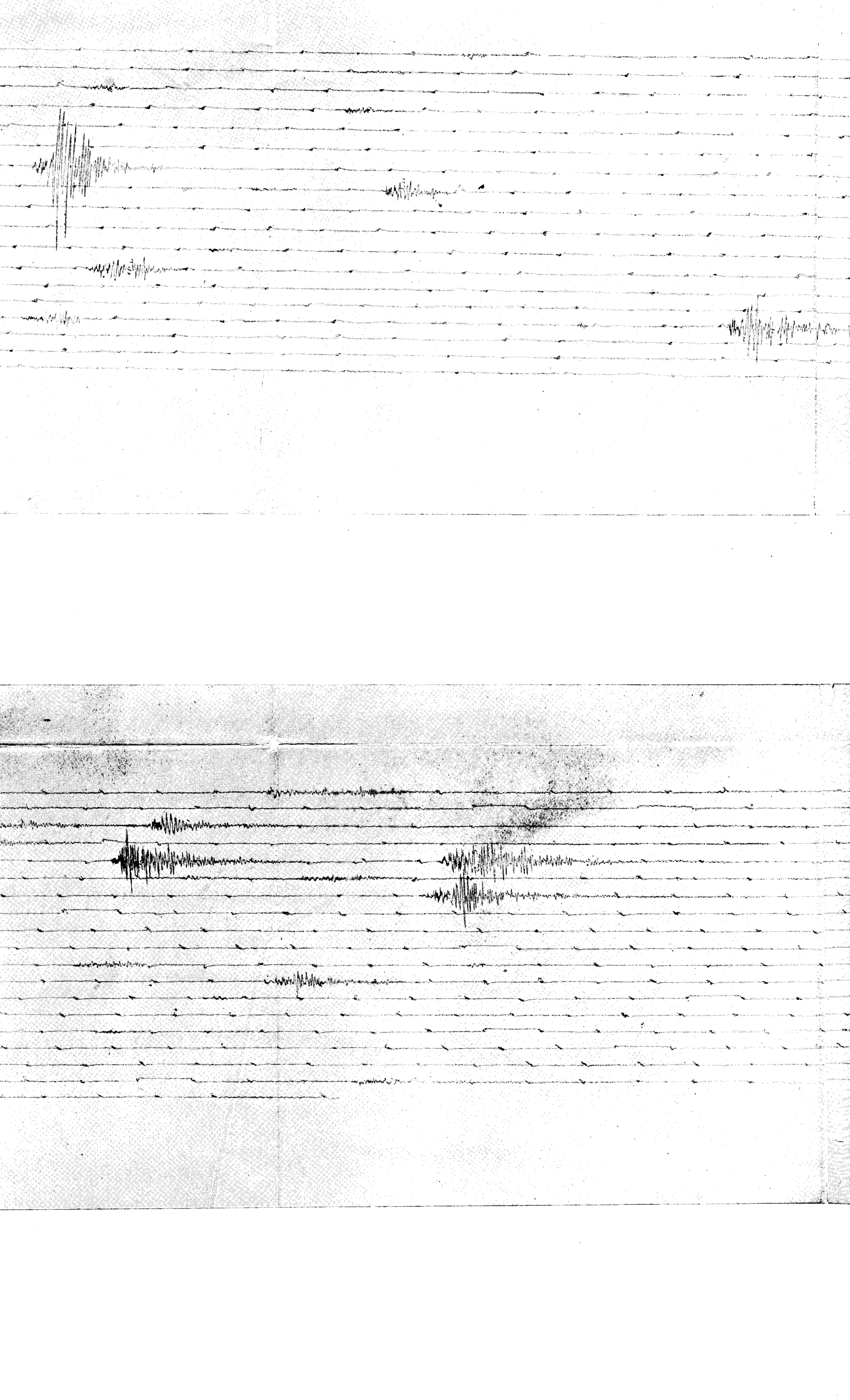
COMPONENTE N.S.





COMPONEN





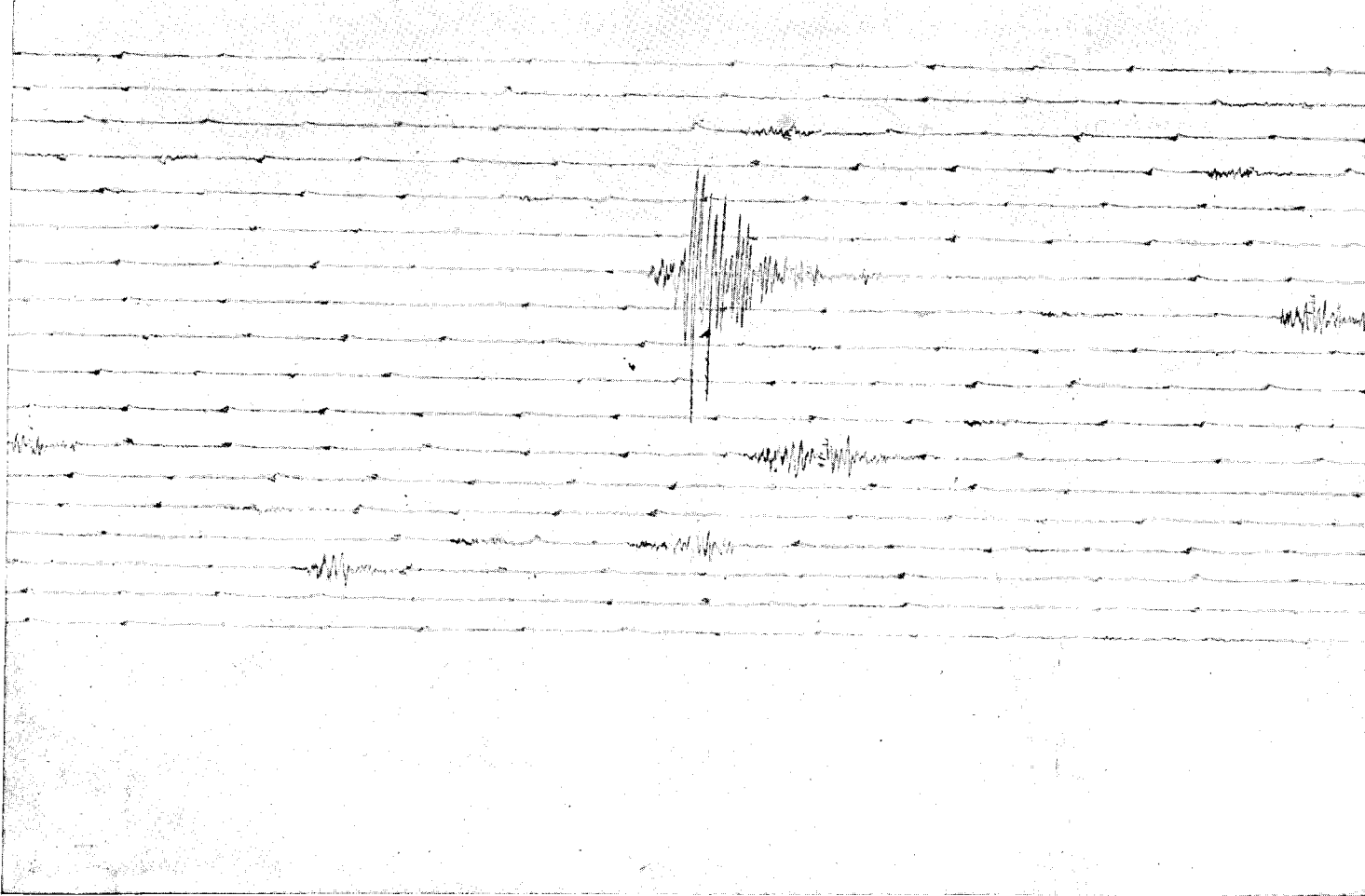


Fig. 2

